

# ORDNANCE HILL, ST JOHN'S WOOD, LONDON NW8





## ORDNANCE HILL, ST JOHN'S WOOD, LONDON NW8

This charming end-of-terrace Georgian house has recently undergone a full refurbishment. Situated in the heart of St John's Wood, this delightful house (approximately 1810 sq ft / 168 sq m) is arranged over four floors and offers a large double front and rear aspect reception room that leads onto a private garden, a separate integrated modern kitchen which leads on to the dining room, four double bedrooms, two bathrooms (one en-suite) and a guest cloakroom. Ordnance Hill is a sought after road located close to St John's Wood High Street and within 0.3 miles of St John's Wood Jubilee Line tube station. Available immediately either furnished or unfurnished.

### ACCOMMODATION AND AMENITIES:

ENTRANCE HALL, GUEST CLOAKROOM, LARGE RECEPTION ROOM, DINING ROOM, SEPARATE KITCHEN, 4 DOUBLE BEDROOMS, 2 BATHROOMS (ONE EN-SUITE), PRIVATE REAR GARDEN. EPC RATING: D

**RENTAL PRICE: £2,150 per week**

**Available FURNISHED or UNFURNISHED**











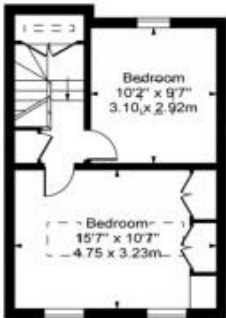




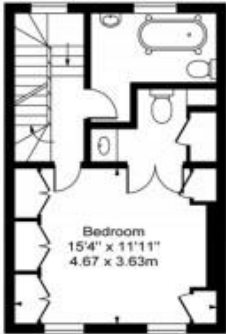




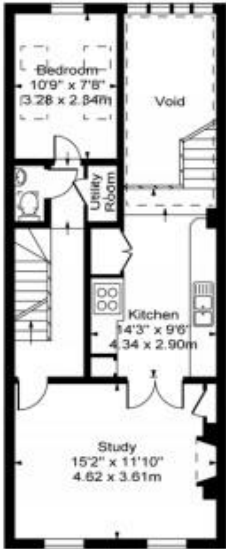
Ordnance Hill, NW8



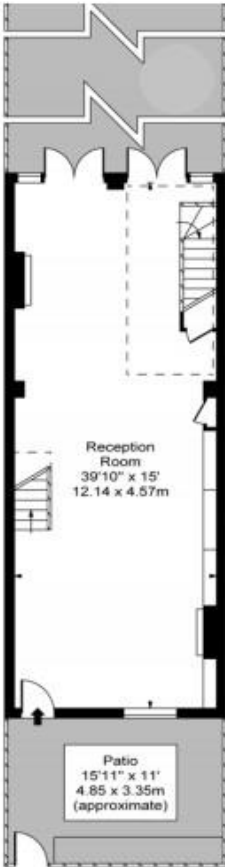
Third Floor



Second Floor



First Floor



Ground Floor

Approx Gross Internal Area    1810 Sq Ft - 168.14 Sq M  
(Excluding Shed, Garden House & Void)