



## Finchley Road, NW3

£950 Per week

A stunning three bedroom home featuring its own private garden and direct access to a spacious communal garden. This beautifully maintained property boasts a stylish open-plan reception with a fully fitted modern kitchen, two generous double bedrooms, a third single bedroom, two sleek contemporary bathrooms, and elegant wood flooring throughout.

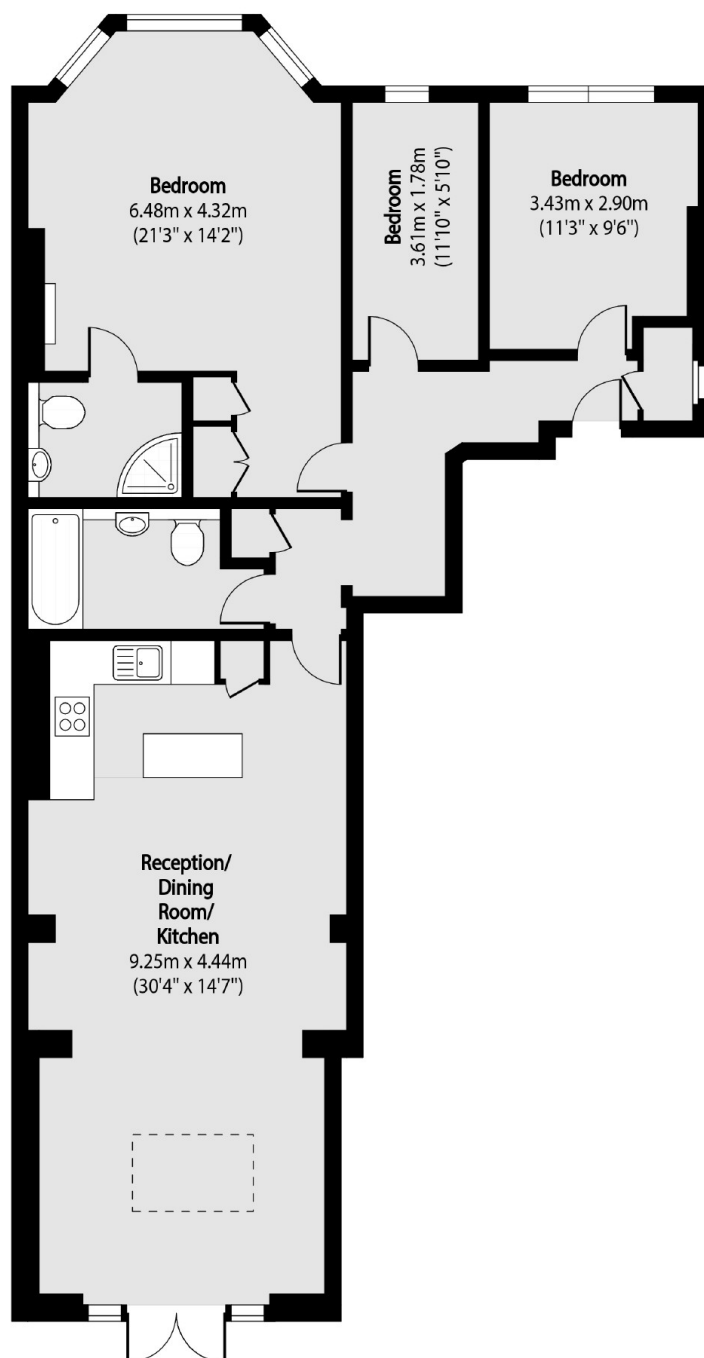
Finchley Road offers a wide range of restaurants, shops, and excellent transport links to the City via Finchley Road Station (Jubilee and Metropolitan Lines), with Finchley and Frognal Station also nearby for added convenience. The property is within walking distance of Hampstead High Street, Hampstead Village, and the beautiful Hampstead Heath, famous for its boutique shops, cafés, and vast green spaces.

### Features

- Three Bedrooms
- Two Bathrooms
- Modern
- Secluded Garden
- Open Plan Living Area
- Wood Flooring



# Finchley Road, London, NW3



Total area (approx): 99.50 sq m (1071 sq. ft)