



John Islip street, SW1P

£685,000

Dexters



## John Islip Street, London, SW1P

A two-bedroom flat with partial river views in a modern purpose-built block with a 24-hour concierge service, this apartment will make a very good rental investment.

Situated on the fourth floor this a bright spacious apartment with partial views of The River Thames, the accommodation comprises two bedrooms, reception room with open plan kitchen, bathroom and a separate WC.

The block has communal hot water and central heating and there is also a roof garden for residents on the 12th floor with panoramic view across London.

The flat is being sold with an assured shorthold tenancy in place which expires on the 9th December 2021. For further details of the rental income please contact our office.

This is an excellent location; Millbank Court is situated behind The Tate Gallery and transport links are very good with Pimlico and Westminster tube stations nearby.

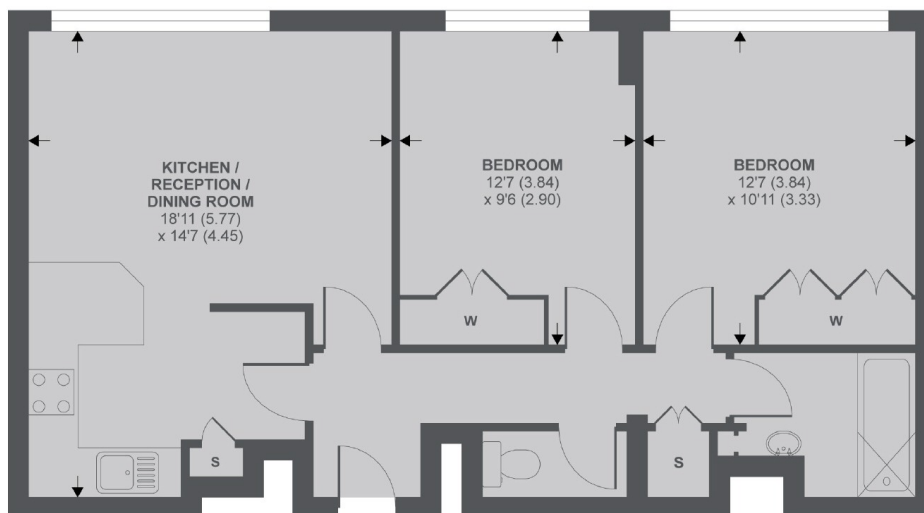
### Features

- Communal Roof Terrace
- Communal Heating /Hot Water
- 24-Hour Concierge
- Two Lifts
- Fourth Floor
- Ad Hoc Parking





# John Islip Street, London, SW1P



4th Floor

## John Islip Street SW1P

APPROX FLOOR AREA 652 SQ.FT 60.5 SQ.M

Copyright nichecom.co.uk 2018 REF : 390567

# Dexters

Westminster  
12 Greycoat Place, London,  
SW1P 1SB

Sales  
020 7590 9570

Energy Rating: D. We aim to make our particulars both accurate and reliable. However they are not guaranteed; nor do they form part of an offer or contract. If you require clarification on any points then please contact us, especially if you're traveling some distance to view. Please note that appliances and heating systems have not been tested and therefore no warranties can be given as to their good working order.



[dexters.co.uk](http://dexters.co.uk)