



Churchill Gardens, SW1V

£550,000

On the 7th floor of a purpose built block, this two double bedroom flat, with a balcony has views across the River Thames to Battersea Power station.

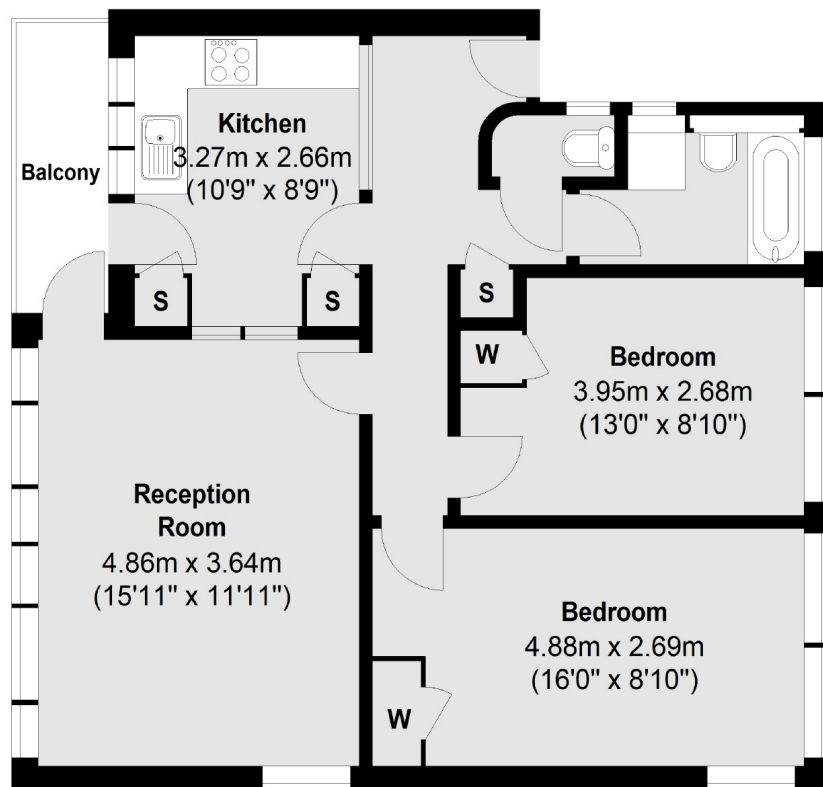
Churchill Gardens is within easy reach of transport from both Pimlico and Victoria stations, there are a wide variety of shops, bars and cafés in the area.

Features

- River Views
- Two Double Bedrooms
- Balcony
- Seventh Floor
- Lift
- Low Service Charge

Churchill Gardens, London, SW1V

Seventh Floor



Internal Area (approx.): 65.6 sq. m (706.1 sq. ft)

Balcony Area (approx.): 3.5 sq. m (37.7 sq. ft)

Contact

To arrange a viewing call our office on the number below or visit our website.



Energy Rating: D. We aim to make our particulars both accurate and reliable. However they are not guaranteed; nor do they form part of an offer or contract. If you require clarification on any points then please contact us, especially if you're traveling some distance to view. Please note that appliances and heating systems have not been tested and therefore no warranties can be given as to their good working order.