

## Westland Place, N1

£725 Per week

A modern three double bedroom apartment located on the fourth floor of this secure development with a lift. This apartment has a main living room with open plan kitchen, main bathroom second en-suite and private balcony.

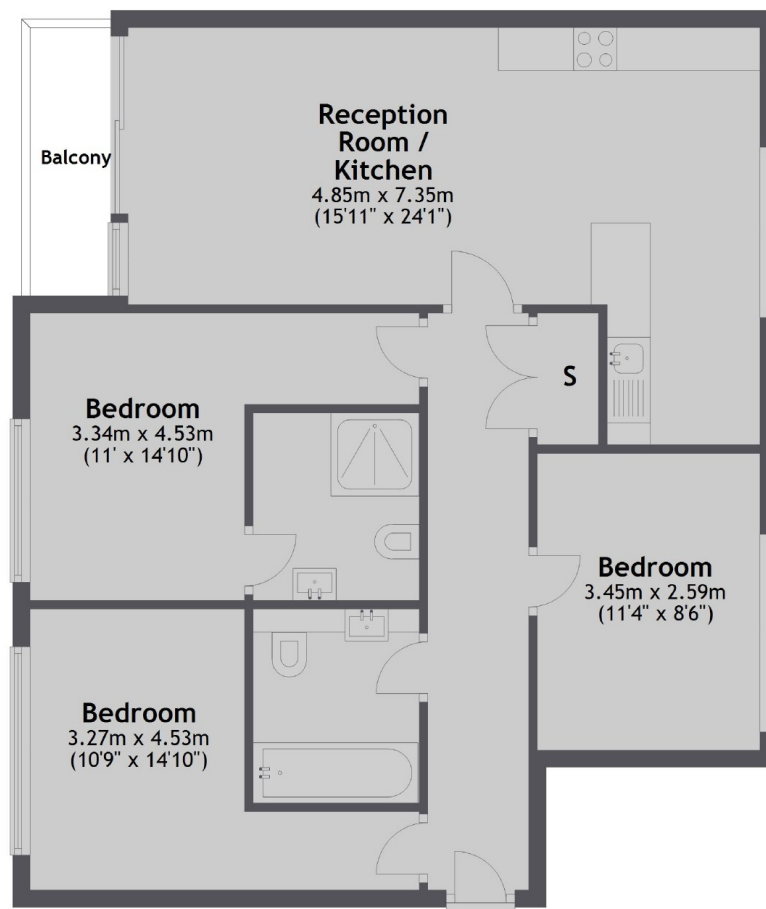
This apartment is located a short distance to Old Street station as well as all the local amenities of Old Street, Shoreditch and a quick commute to the City.

### Features

Three Double Bedrooms  
Modern  
Two Bathrooms  
Fourth Floor  
Private Balcony  
Furnished

## Westland Place, London, N1

### Forth Floor



Total area: approx. 77.0 sq. metres (828.4 sq. feet)

### Contact

To arrange a viewing call our office on the number below or visit our website.



Energy Rating: B. We aim to make our particulars both accurate and reliable. However they are not guaranteed; nor do they form part of an offer or contract. If you require clarification on any points then please contact us, especially if you're traveling some distance to view. Please note that appliances and heating systems have not been tested and therefore no warranties can be given as to their good working order.