



Old Castle Street, E1

£350,000

A one bedroom property located in Arcadia Court. The apartment has a semi open plan kitchen and living room that looks out onto the City, double bedroom and ample storage. The property is sold chain free and has an allocated parking space.

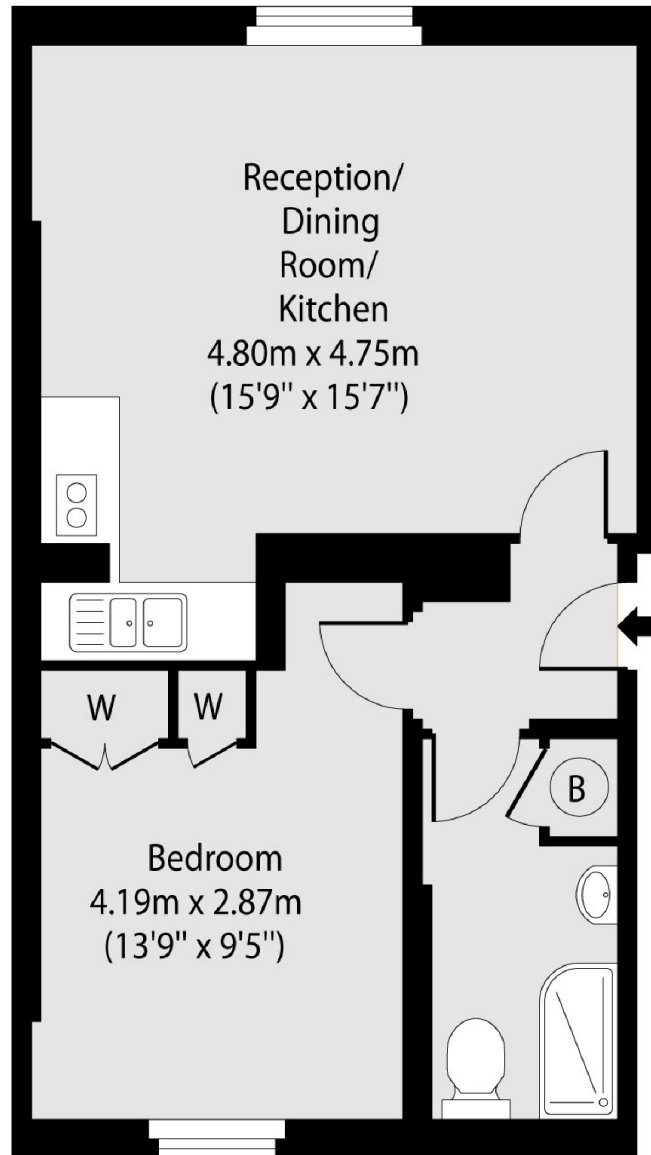
Arcadia Court is located under half a mile from Aldgate Station and Liverpool Street Station. Old Spitalfields Market is just over quarter of a mile away, where you will find local food markets and restaurants.

Features

- One Bedroom
- Allocated Parking
- City Views
- Chain Free
- Secure Development
- Communal Roof Terrace

Old Castle Street,
London, E1

First Floor



Total area (approx): 38.92 sq m (419 sq. ft)