



## Wimbourne Street, N1

### £425,000

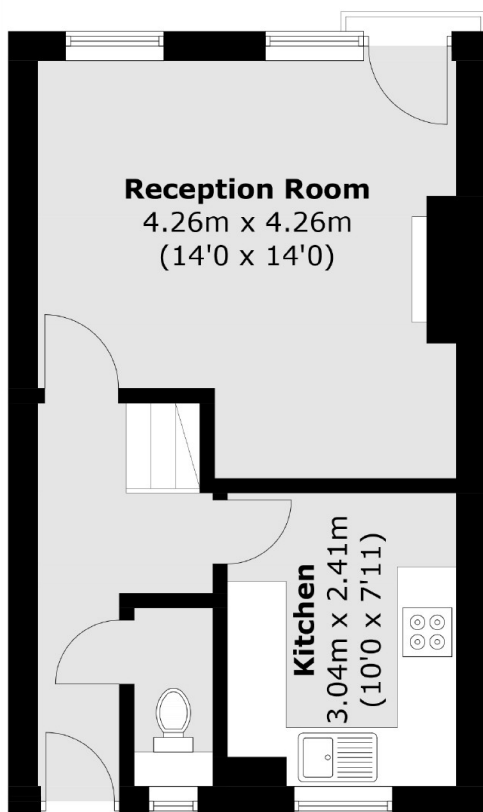
A two double bedroom apartment split over two levels in a purpose built secure development located in Hoxton. The apartment is comprised of a spacious reception room which opens onto a private balcony, two double bedrooms with plentiful storage space, a kitchen/diner, and a family bathroom with separate WC.

Bracklyn Court is only 100 meters from the Regents Canal and Shoreditch Park, whilst Old Street underground station is within half a mile. The local area also offers an array of shops, restaurants and bars. Curzon cinema and Hoxton street market all within short walking distance.

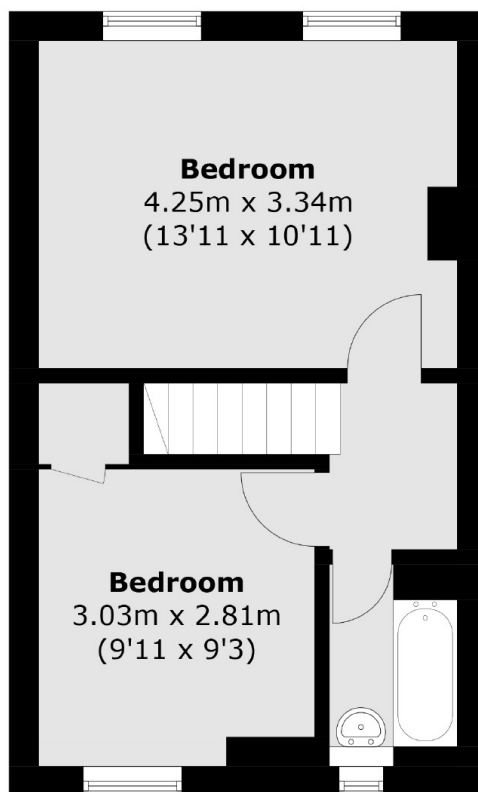
### Features

- Two Double Bedrooms
- Split Level
- Balcony
- Views of Shoreditch Park
- Separate WC
- Britannia Leisure Centre
- Nearby

# Wimbourne Street, London, N1



**Ground Floor**



**First Floor**

Total area (approx.): 63.3 sq. m (681.4 sq. ft)