



Wheler Street, E1

£375,000

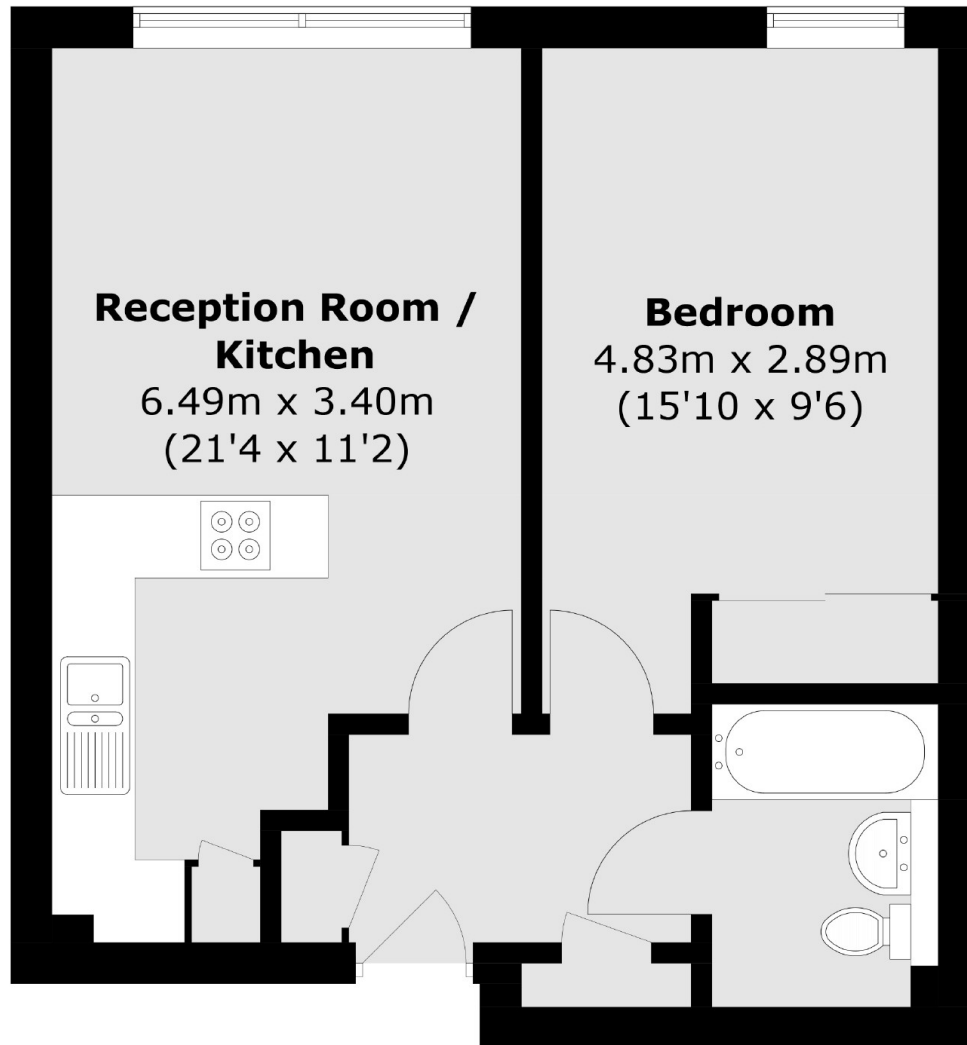
A modern, one double bedroom apartment located within a secure, purpose built development. This property features an open plan kitchen/living area, wooden floors throughout, and plenty of built in storage.

This apartment is located within a quarter of a mile of Old Spitalfields market which provides a selection of restaurants, cafés and bars. The property is a short walk from Shoreditch High Street Station (Overground), Old Street Station (Northern Line) and Liverpool Street Station (Elizabeth Line).

Features

- Lift Access
- Good Transport Links
- Secure Development
- Double Bedroom
- Wooden Flooring
- Built in Storage

Wheler Street,
London, E1



Total area (approx.): 43.2 sq. m (465.0 sq. ft)

Dexters

Shoreditch
44 Great Eastern Street
London
EC2A 3EP
Sales
0207 483 6371

Energy Rating: C. We aim to make our particulars both accurate and reliable. However they are not guaranteed; nor do they form part of an offer or contract. If you require clarification on any points then please contact us, especially if you're traveling some distance to view. Please note that appliances and heating systems have not been tested and therefore no warranties can be given as to their good working order.

 **RICS** | Regulated
Estate Agent
and Letting Agent

[dexters.co.uk](https://www.dexters.co.uk)