



Hackney Road, E2

£725,000

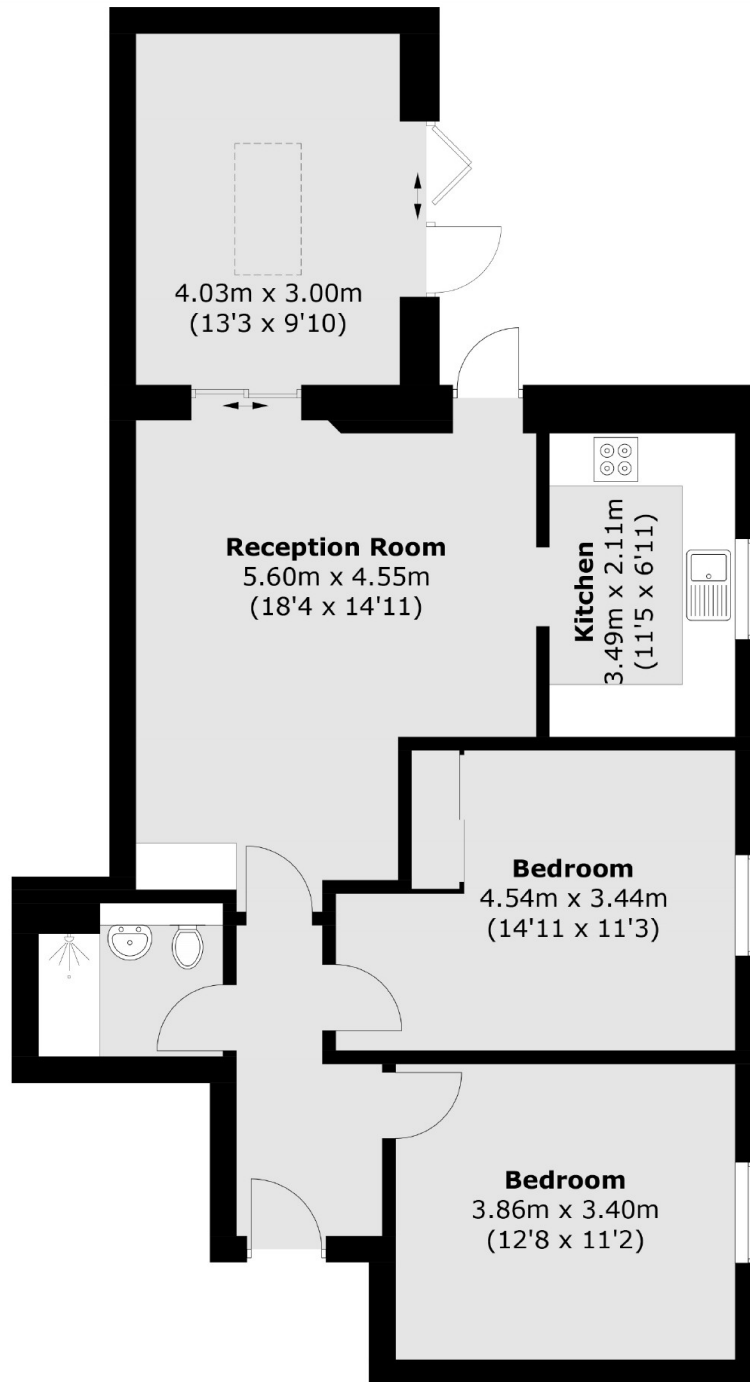
This Victorian church conversion is comprised of a spacious entryway leading onto an open plan dining/ reception area, a modern, semi open plan kitchen with large windows, two double bedrooms, and a fully tiled, contemporary family bathroom. The recent extension to the rear of the property features a skylight and bi-fold doors which open onto a large, private patio.

Located on Hackney road the area offers some of Shoreditch and Hackneys most popular bars and restaurants. The famous Columbia Flower Market is just 0.2 miles away. The closest station is Hoxton Overground within a quarter of a mile and Old Street on the Northern Line is just over half a mile walk.

Features

- Church Conversion
- Two Double Bedrooms
- Private Garden
- Modern Finish
- Open Plan
- Share of Freehold

Hackney Road, London, E2



Total area (approx.): 82.0 sq. m (882.6 sq. ft)

Dexters

Shoreditch
44 Great Eastern Street
London
EC2A 3EP
Sales
0207 483 6371

Energy Rating: D. We aim to make our particulars both accurate and reliable. However they are not guaranteed; nor do they form part of an offer or contract. If you require clarification on any points then please contact us, especially if you're traveling some distance to view. Please note that appliances and heating systems have not been tested and therefore no warranties can be given as to their good working order.

 **RICS** | Regulated
Estate Agent
and Letting Agent

[dexters.co.uk](https://www.dexters.co.uk)