



Times Square, E1

£580,000

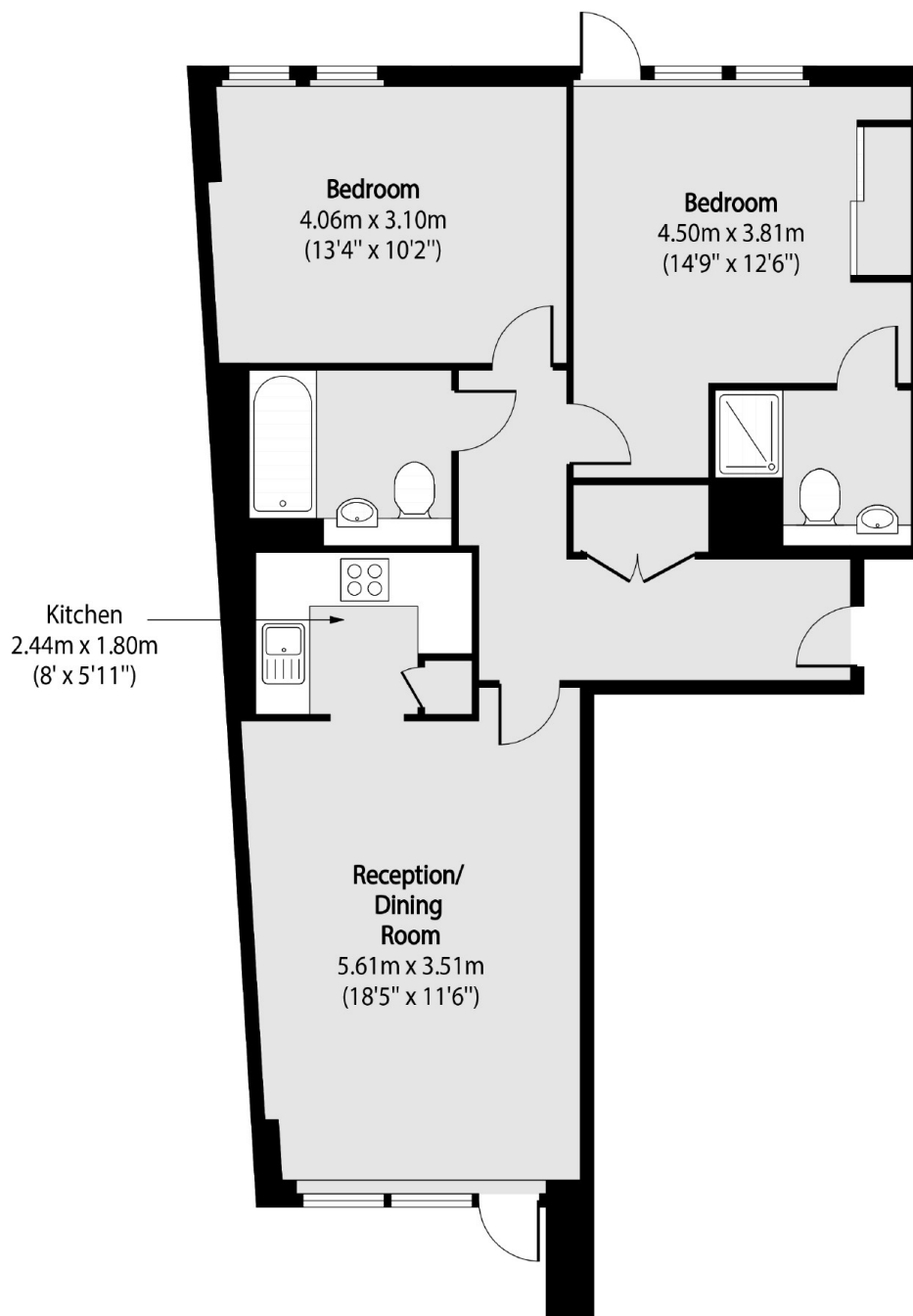
A dual aspect, two double bedroom apartment with a south facing patio garden and views overlooking the communal gardens. This property offers open plan living from the kitchen to dining area, built in storage and is located within a secure gated development with concierge.

Times Square is located half a mile from Aldgate and Tower Hill underground stations for access to the City. Tower Gateway DLR station is half a mile away, giving access to London City Airport and East London.

Features

- Two Double Bedrooms
- Two Bathrooms
- Modern Development
- Concierge
- Gated Complex
- South Facing

Times Square, London, E1



Total area (approx): 71.72 sq m (772 sq. ft)