

Times Square, E1

£425,000

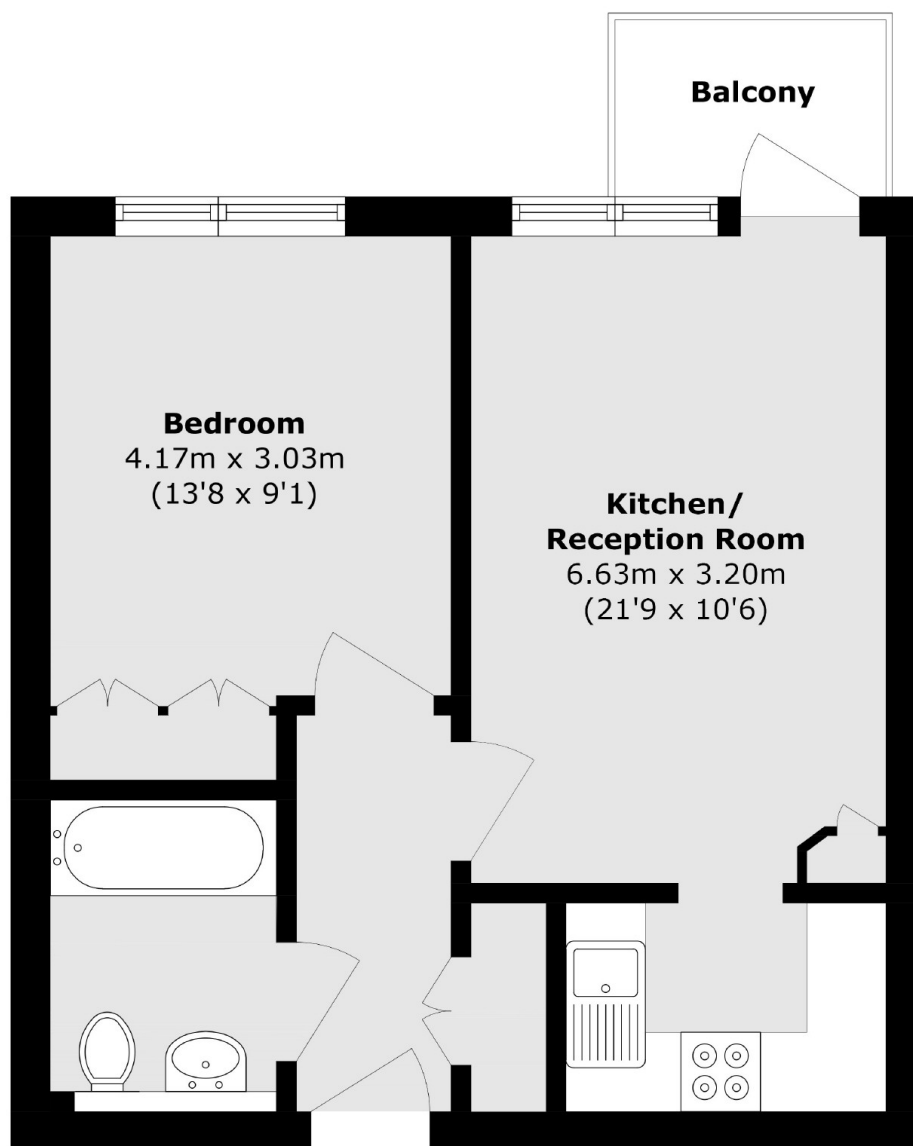
A modern, one bedroom apartment located within this gated development. This property features contemporary style, with a semi-open plan reception/kitchen featuring floor to ceiling windows and wooden flooring, a private balcony, family bathroom and double bedroom with built in storage. The Times Square development also offers an expansive communal garden, with water feature, and concierge.

Times Square Apartments is located just half a mile from Aldgate, Aldgate East and Tower Hill (Central Line), and is just a short distance from Shadwell, providing access to the Windrush line and DLR.

Features

- One Double Bedroom
- Private Balcony
- Communal Garden
- Concierge
- Modern Design
- Great Transport Links

Times Square, London, E1



Total area (approx.): 41.9 sq. m (451.0 sq. ft)

Balcony area (approx.): 2.7 sq. m (29.0 sq. ft)