



## Conant Mews, E1

£600,000

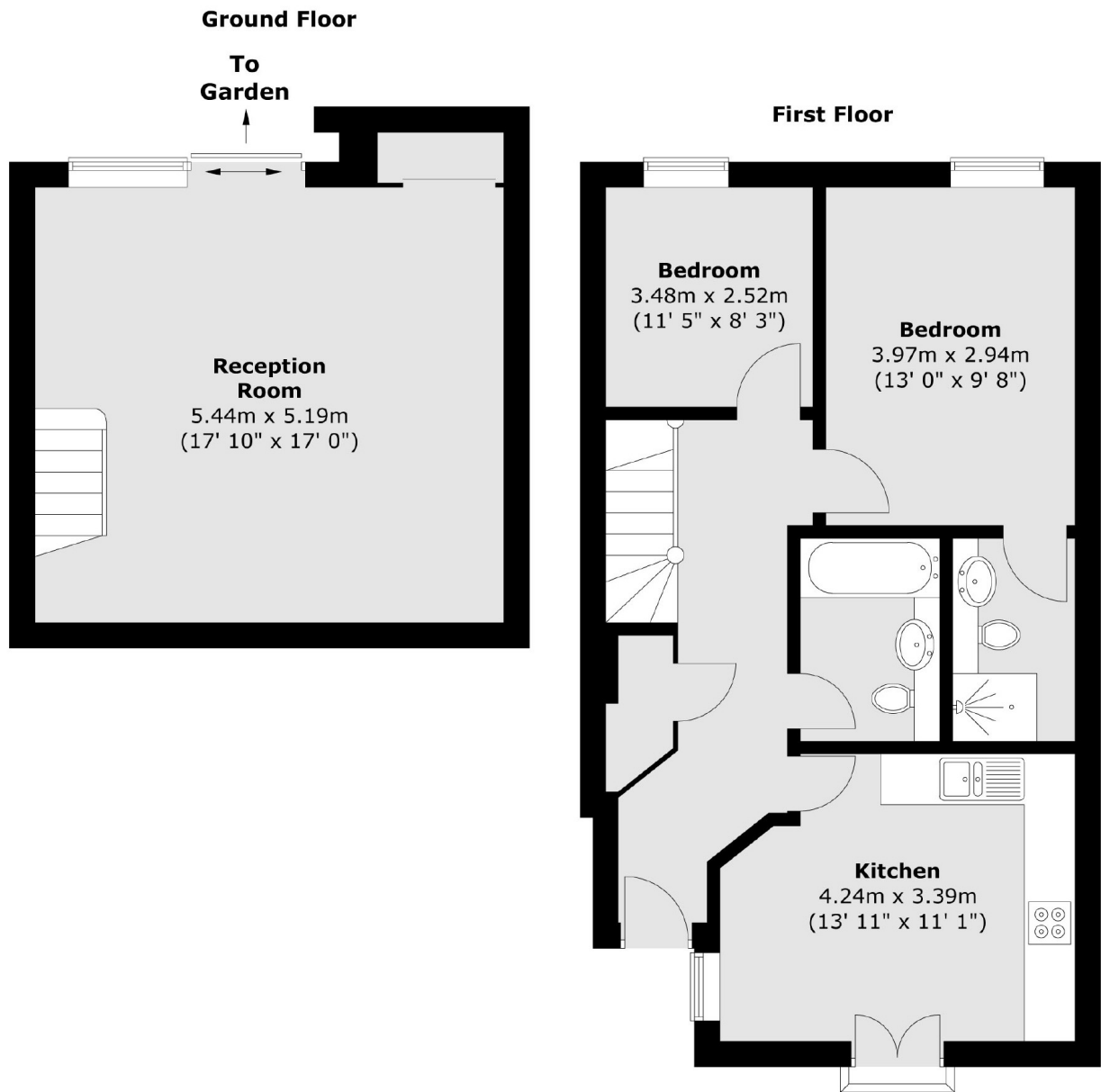
A two double bedroom, two bathroom split level flat in the popular Hooper Square development. The apartment offers a large reception area, a separate kitchen, two good sized double bedrooms, one of which is en suite, a patio garden and 24hr concierge.

Hooper Square is perfectly located for access to Tower Hill and Liverpool Street Station (Elizabeth Line), and is just a short distance from Spitalfields market.

### Features

- Two Double Bedrooms
- Split Level
- 24hr Concierge Service
- Two Bathrooms
- Patio Garden
- Garage

# Conant Mews, London, E1



Total area (approx.) : 84.2 sq. m (906 sq. ft)  
Total balcony area (approx.) : 0.2 sq. m (2 sq. ft)