



## Gibraltar Walk, E2

£1,600,000

A Victorian freehold house located on Gibraltar Walk. This three bed, two bathroom property is set over four floors. The ground floor consists of a large living space with WC and hidden bedroom/study space to the rear. The lower floor comprises a fully fitted recording studio with another WC, a wine cellar large storage space and also access to a small internal yard area. Moving up, the first floor is made up of an open kitchen/living area with original sash windows on both sides of the house. The top floor is occupied by a large master bedroom with plenty of storage and a three piece bathroom/shower room. From this area you can access further outside space on the roof of the property.

Gibraltar Walk located off Bethnal Green Road is an original terrace of red brick 19th century artisans' workshops that were once home to the bustling furniture trade. The surrounding area is packed with a vast array of boutique shops, award winning coffee houses such as Allpress on Redchurch Street and pubs, plus even more in nearby Shoreditch. Shoreditch High St overground and Liverpool St station are both minutes away along with numerous bus routes.

### Features

- Three Double Bedrooms
- Internal Lift
- Gas Stove Top
- Victorian
- Wine Cellar
- Freehold

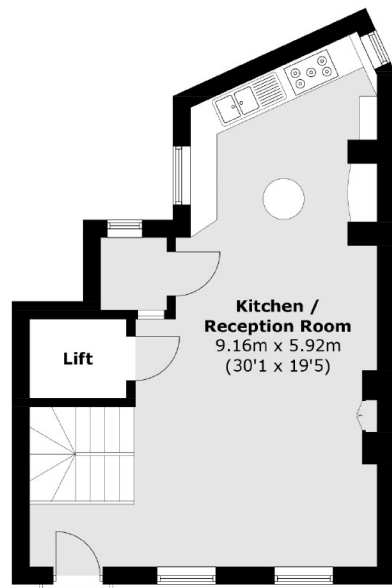


## Gibraltar Walk, E2

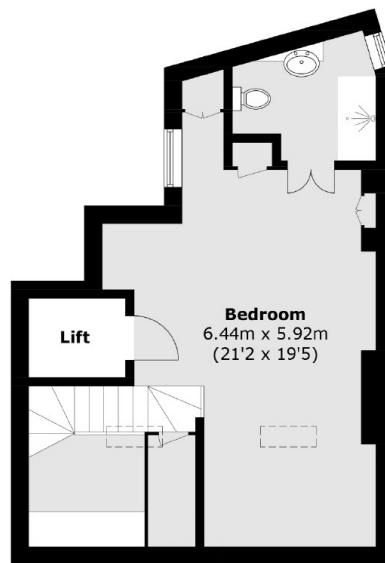
Converted in the late nineties, this freehold Victorian warehouse on the cobbled street Gibraltar Walk retains its much sought after designated live/work status. As well as many unique and authentic features, the house also has a professionally soundproof recording studio in the lower ground floor and an internal lift serving all floors.



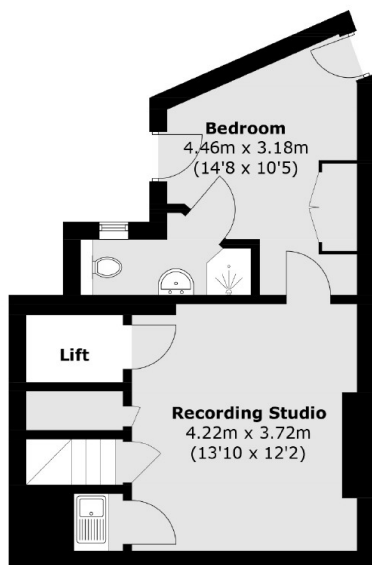
# Gibraltar Walk, London, E2



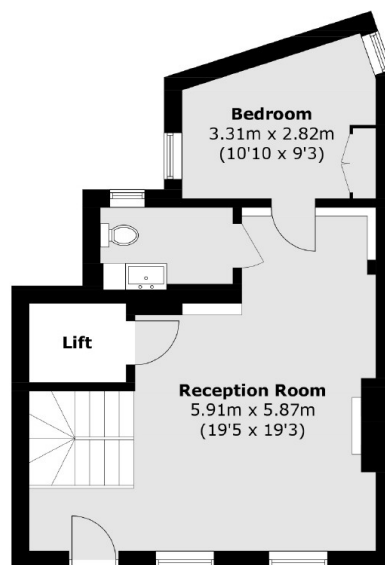
**First Floor**



**Second Floor**



**Basement /  
Lower Ground Floor**



**Ground Floor**

Total area (approx.): 148.9 sq. m (1,602.5 sq. ft)  
(Including Basement / Excluding Lift)