



Middlesex Street, E1

£500,000

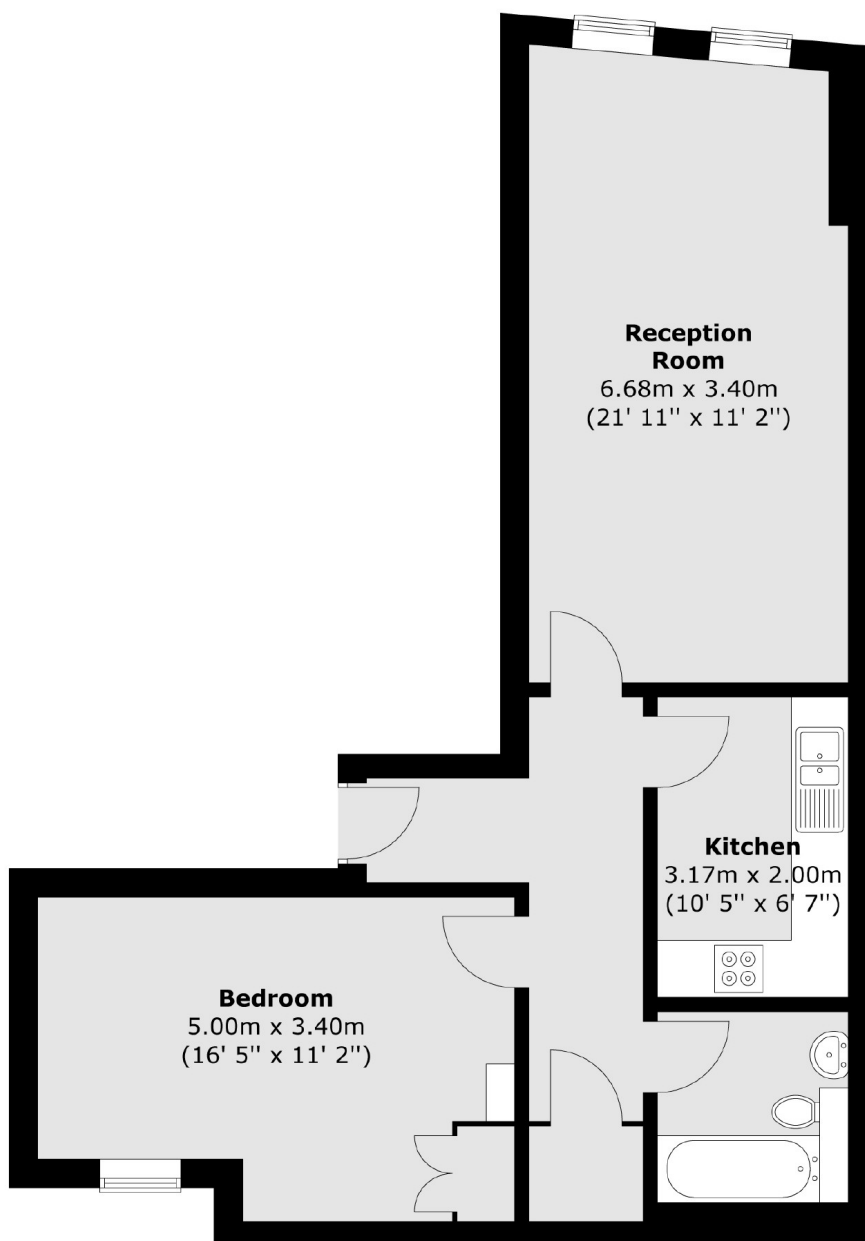
A one bedroom apartment set with a sought after period conversion in a central City location. The apartment offers a large, bright living room with space to dine, a separate integrated kitchen, a family bathroom and a large double bedroom with ample storage.

Middlesex Street is situated in the heart of Liverpool Street, providing good access to many amenities including local pubs, restaurants and gyms. Well connected with easy routes into Aldgate East, Tower Bridge and Canary Wharf also providing a convenient location with transport links to all corners of the City and beyond. Liverpool Street station is within a 0.1 mile walk and underground lines include the Elizabeth Line, Central Line, Circle Line, Hammersmith & City Line and Metropolitan Line routes.

Features

- One Large Double Bedroom
- Modern Interiors
- Secure Development
- Central City Location
- Period Conversion
- Great Transport Links

Middlesex Street, London, E1



Total area (approx.) : 59.3 sq. m (638 sq. ft)