



Boyd Street, E1

£650,000

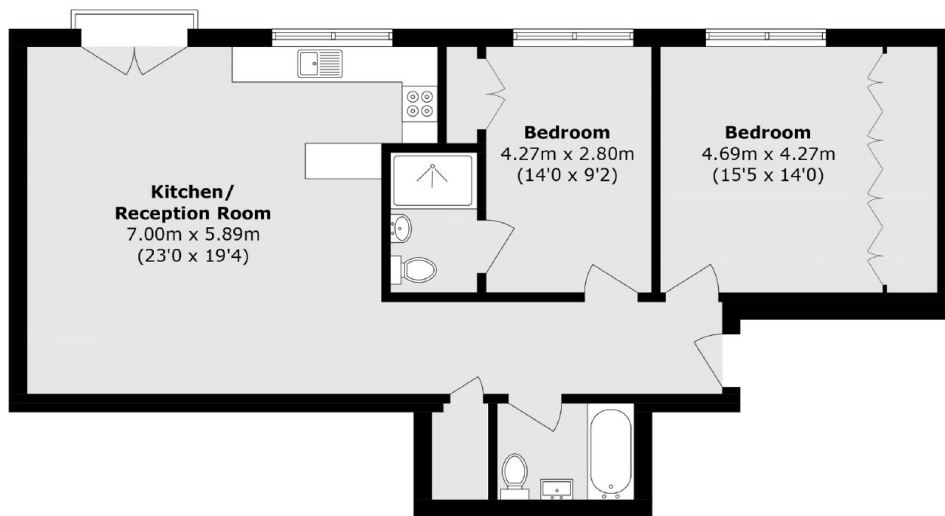
A large, bright warehouse conversion featuring bare brick walls and hardwood flooring. This property offers an expansive, open plan reception/kitchen with built in appliances and plenty of natural light, and two double bedrooms. The primary bedroom provides a full wall of bespoke, built-in storage, and the second bedroom has an en suite, with a second family bathroom across the hall.

Boyd Street is located in Aldgate, offering a vast selection of restaurants, bars, and cafés. This central location makes travel throughout the City easy, with both Aldgate East (Hammersmith&City, District), Liverpool Street (Elizabeth) and Shadwell (Windrush, DLR) all nearby.

Features

- Warehouse Conversion
- Two Double Bedrooms
- Two Bathrooms
- Original Features
- Hardwood Flooring
- Share of Freehold

Boyd Street, London, E1



Total area (approx.): 90.6 sq. m (975.2 sq. ft)