



Cowper Street, EC2A
£950,000

Dexters



Cowper Street, EC2A

This split-level warehouse conversion was once a cigar factory and retains some of the original features, such as the original hoist, its own private entrance to the front with a second larger door for easy loading, plus a void to the front which provides daylight to the lower floor dining rooms and kitchen and a light well to the rear of the property. The ground floor has been set up with a home office that leads onto the large open living room. Taking the central stairs down to the lower floor, there is a bar style kitchen with a separate dining room with a double-height ceiling. To the rear is a generous double bedroom complete with a walk-in closet area plus a separate shower room.

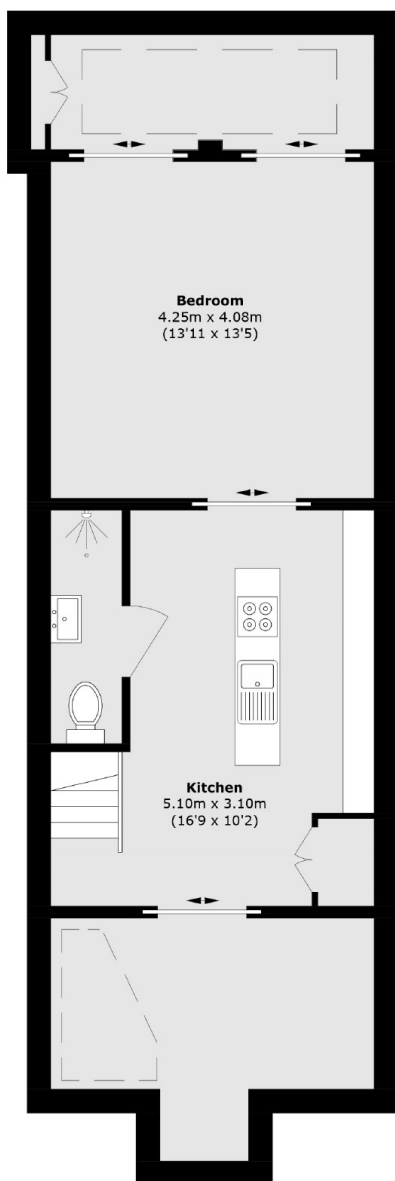
Cowper Street is a quiet street set back from Old Street Station, where you will find the Northern Line and National Rail. Liverpool Street Station and Moregate are located a short walk from the apartment, giving easy access to the City and the key airports. Shoreditch is renowned for its boutique stores and coffee shops, not to mention the variety in restaurants and the vibrant nightlife it has to offer.

Features

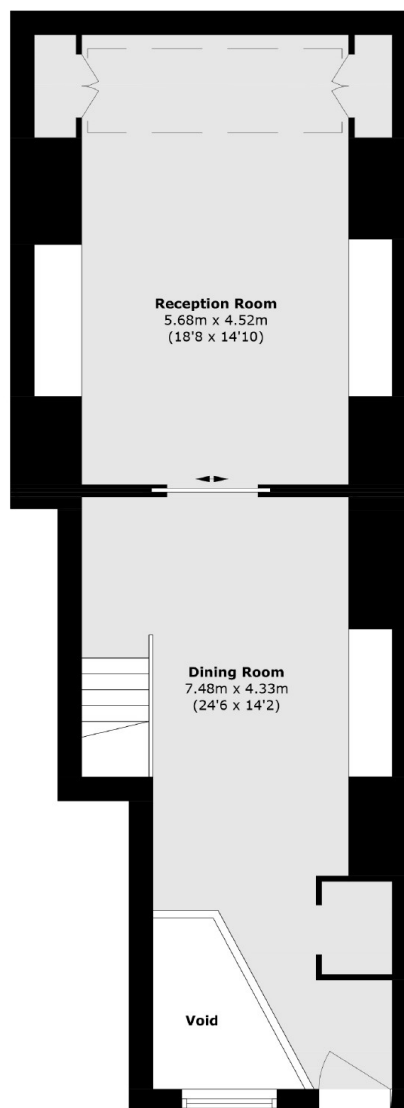
- One Double Bedroom
- Warehouse Conversion
- Original Features
- Recently Renovated
- Fantastic Location
- Split Level



Cowper Street, London, EC2A



Lower Ground Floor



Ground Floor

Total area (approx.): 105.0 sq. m (1130.2 sq. ft)
(Excluding Void)