

## Esker Place, E2

### £450,000

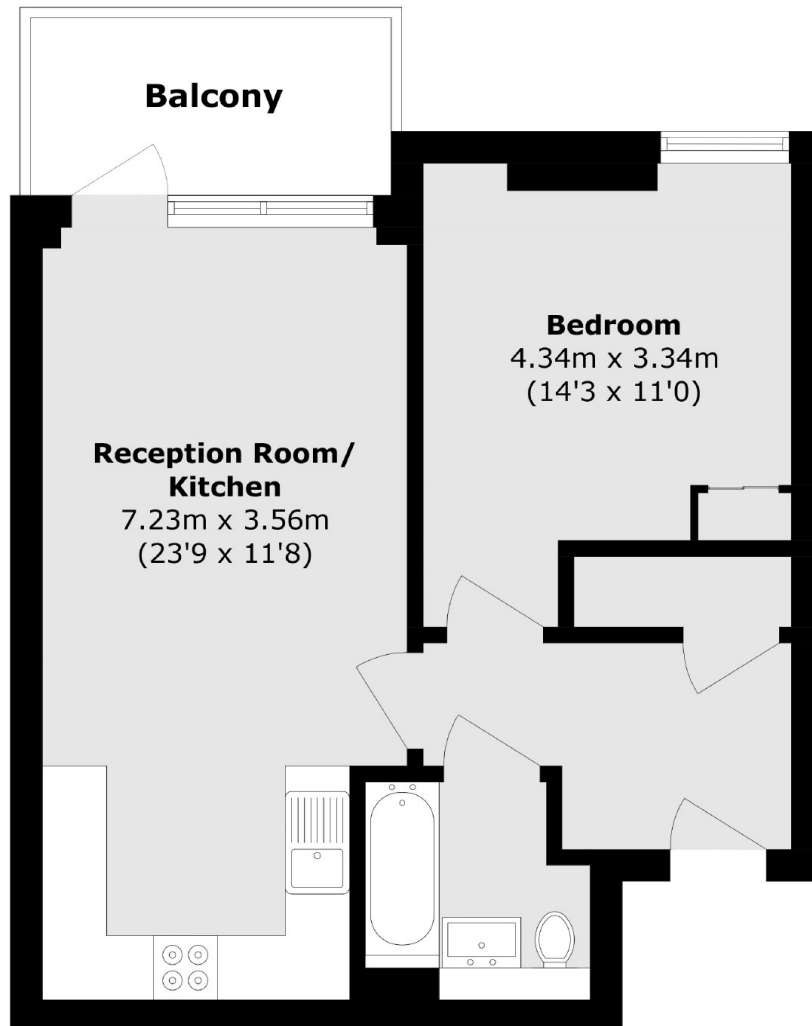
A one bedroom apartment situated on the third floor of a modern development. The apartment offers contemporary, open plan living with space to dine and an integrated kitchen; this area leads onto a private west facing balcony. The property also has a double bedroom with built in storage, a modern bathroom with underfloor heating, and wood flooring throughout.

Located minutes from the popular Broadway Market, London Fields, Victoria and Haggerston Parks. The property is within walking distance of Cambridge Heath Station (Overground), Bethnal Green tube (Central Line) and the Elizabeth Line at Whitechapel, providing easy access into Central London and Heathrow Airport.

### Features

- One Bedroom Apartment
- South-West facing
- Private Balcony
- Sought After Location
- Bike Storage
- Wooden Flooring

# Esker Place, London, E2



Total area (approx.): 50.0 sq. m (538.2 sq. ft)  
Balcony area (approx.): 5.5 sq. m (59.2 sq. ft)