



## Fairclough Street, E1

### £700,000

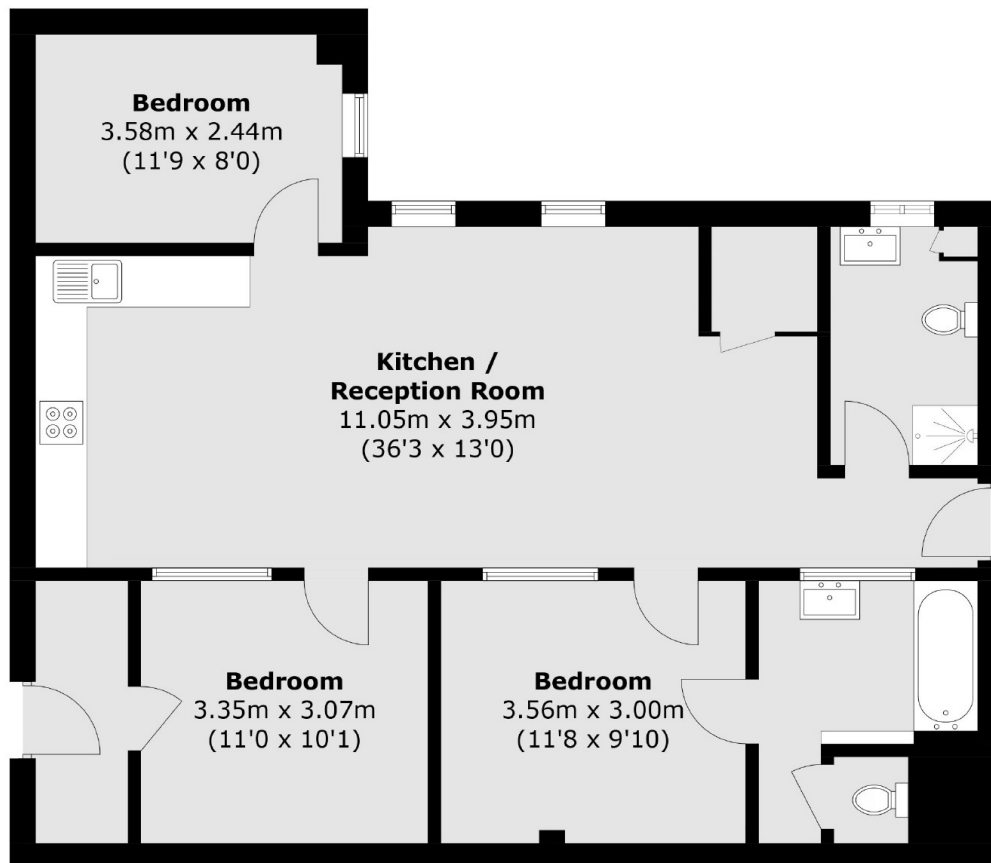
A large three-bed warehouse conversion. The apartment comprises a large open-plan living room/kitchen with exposed brick. Just off it, three double bedrooms, one with an en-suite and a family bathroom.

Fairclough Street is located within close proximity to the vibrant Brick Lane and is close to St Katharine Docks, where you have a large variety of restaurants and bars overlooking the marina, not to mention numerous transport links at Whitechapel, Aldgate East and Tower Hill.

### Features

- Three Double Bedrooms
- Two Bathrooms
- Exposed Brick Work
- Open Plan
- Gated Development
- Aldgate

# Fairclough Street, London, E1



Total area (approx.): 87.2 sq. m (942.9 sq. ft)

## Dexters

Shoreditch  
44 Great Eastern Street  
London  
EC2A 3EP  
Sales  
0207 483 6371

Energy Rating: C. We aim to make our particulars both accurate and reliable. However they are not guaranteed; nor do they form part of an offer or contract. If you require clarification on any points then please contact us, especially if you're traveling some distance to view. Please note that appliances and heating systems have not been tested and therefore no warranties can be given as to their good working order.

 **RICS** | Regulated  
Estate Agent  
and Letting Agent

[dexters.co.uk](https://www.dexters.co.uk)