



Fairclough Street, E1

£700,000

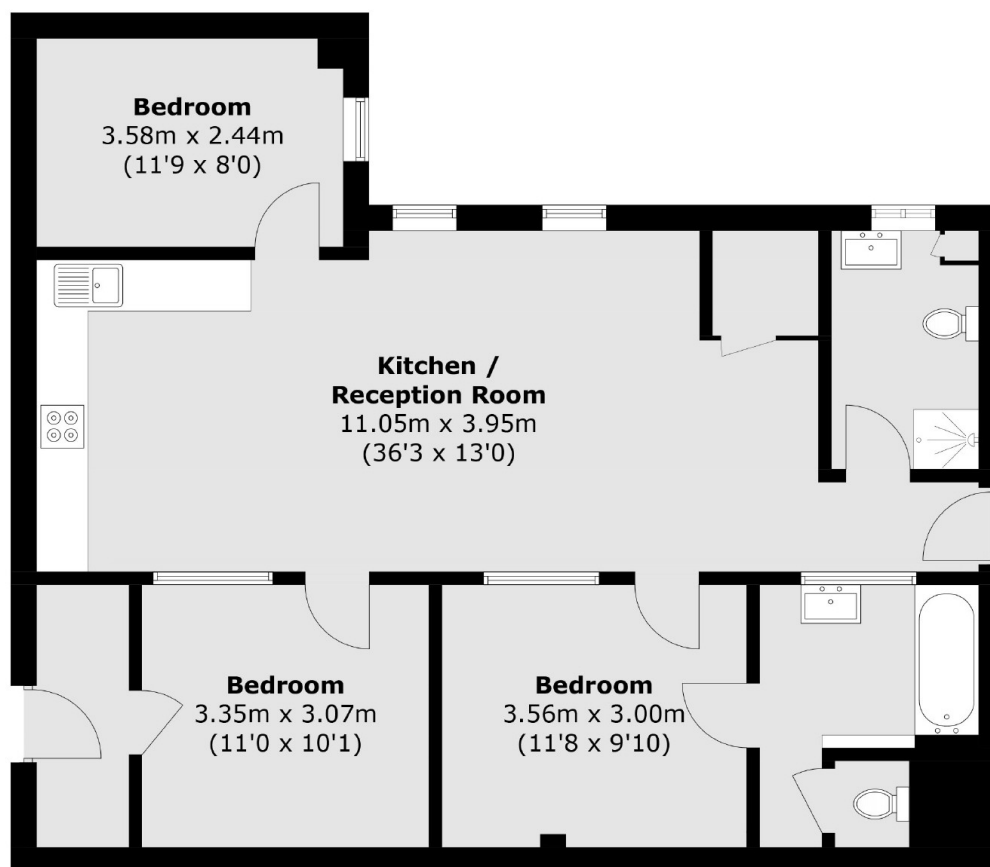
A large three-bed warehouse conversion. The apartment comprises a large open-plan living room/kitchen with exposed brick. Just off it, three double bedrooms, one with an en-suite and a family bathroom.

Fairclough Street is located within close proximity to the vibrant Brick Lane and is close to St Katharine Docks, where you have a large variety of restaurants and bars overlooking the marina, not to mention numerous transport links at Whitechapel, Aldgate East and Tower Hill.

Features

- Three Double Bedrooms
- Two Bathrooms
- Exposed Brick Work
- Open Plan
- Gated Development
- Aldgate

Fairclough Street, London, E1



Total area (approx.): 87.2 sq. m (942.9 sq. ft)