



Bourne Estate, EC1N

£500,000

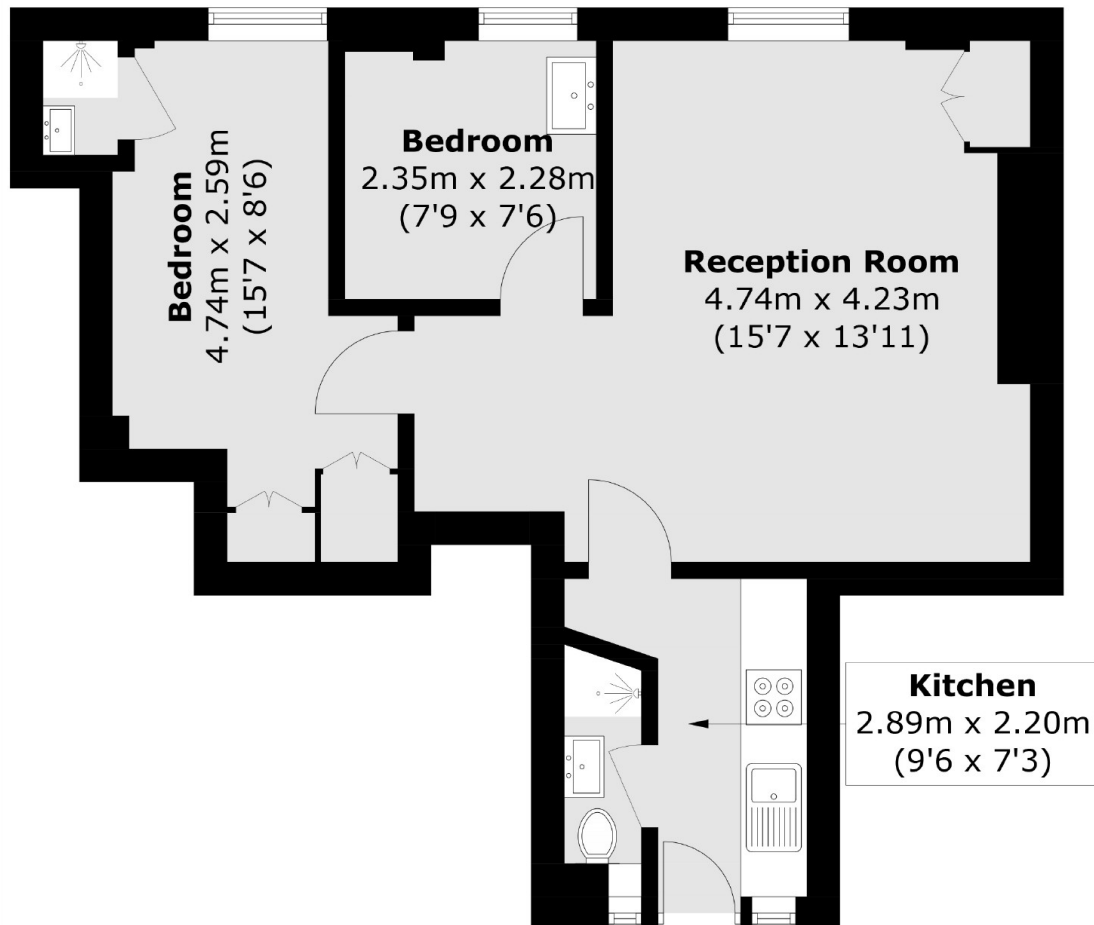
A two bedroom property set within the Bourne Estate moments from Hatton Garden. The property has a fully integrated galley kitchen upon entry which leads into the generous living area with space to dine. The property has two double bedrooms, one of which is en-suite and benefits from ample natural light via the large sash windows found in each room.

The surrounding area of Clerkenwell and Farringdon is known for its restaurants, cafés, and excellent transport links. St Paul's, Smithfield Market, and the City's financial district are all within a short distance, while the West End is a bus ride or walk away. Farringdon Station is close by, offering access to the Elizabeth Line, Hammersmith & City, and Metropolitan Lines, along with overground services to Gatwick and Luton Airports, making travel across London and beyond easy.

Features

- Two Bedrooms
- Two Bathrooms
- Sought After Location
- Fully Integrated Kitchen
- Bright Interiors
- Wooden Flooring

Bourne Estate, London, EC1N



Total area (approx.): 45.2 sq. m (486.5 sq. ft)

Dexters

Shoreditch
44 Great Eastern Street
London
EC2A 3EP
Sales
0207 483 6371

Energy Rating: C. We aim to make our particulars both accurate and reliable. However they are not guaranteed; nor do they form part of an offer or contract. If you require clarification on any points then please contact us, especially if you're traveling some distance to view. Please note that appliances and heating systems have not been tested and therefore no warranties can be given as to their good working order.

 **RICS** | Regulated
Estate Agent
and Letting Agent

[dexters.co.uk](https://www.dexters.co.uk)