



Coke Street, E1

£450,000

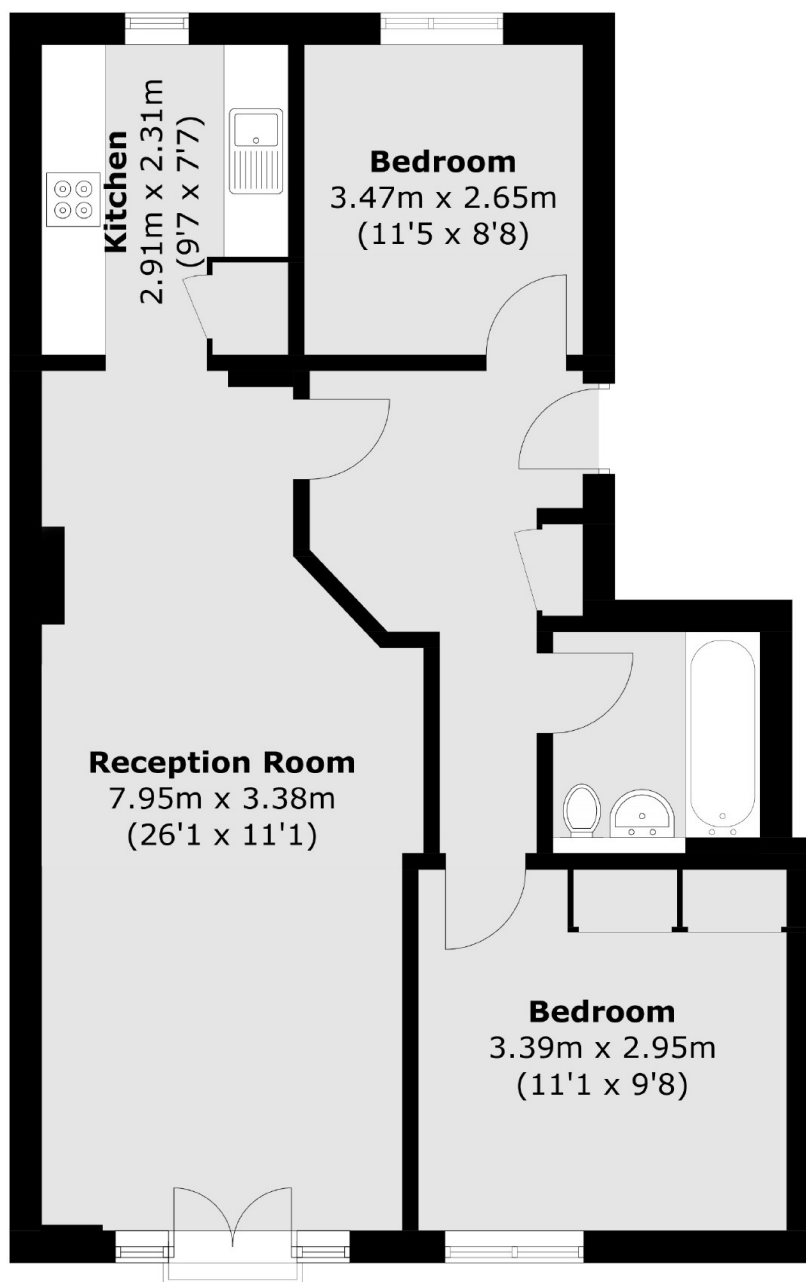
A spacious two bedroom apartment located on the third floor in a sought over location. This property provides a generous reception room with a Juliette balcony, a separate kitchen, two double bedrooms and a family bathroom. This flat also offers ample storage space and wooden flooring throughout and the development features 24 hour concierge and access to the roof terrace. The property also comes with an allocated, secure, underground parking space.

This ideal location provides multiple transport links including Aldgate (Circle, Metropolitan), Whitechapel (District, Hammersmith&City) and Liverpool Street (Elizabeth) stations, as well as a number of bus routes. The local area is also close to a range of shops, restaurants, bars and other amenities.

Features

- Two Double Bedrooms
- Communal Roof Terrace
- 24hr Concierge
- Gym and Sauna
- Parking Space
- Great Transport Links

Coke Street, London, E1



Total area (approx.): 66.9 sq. m (720.1 sq. ft)