



St. John's Place, EC1M

£550,000

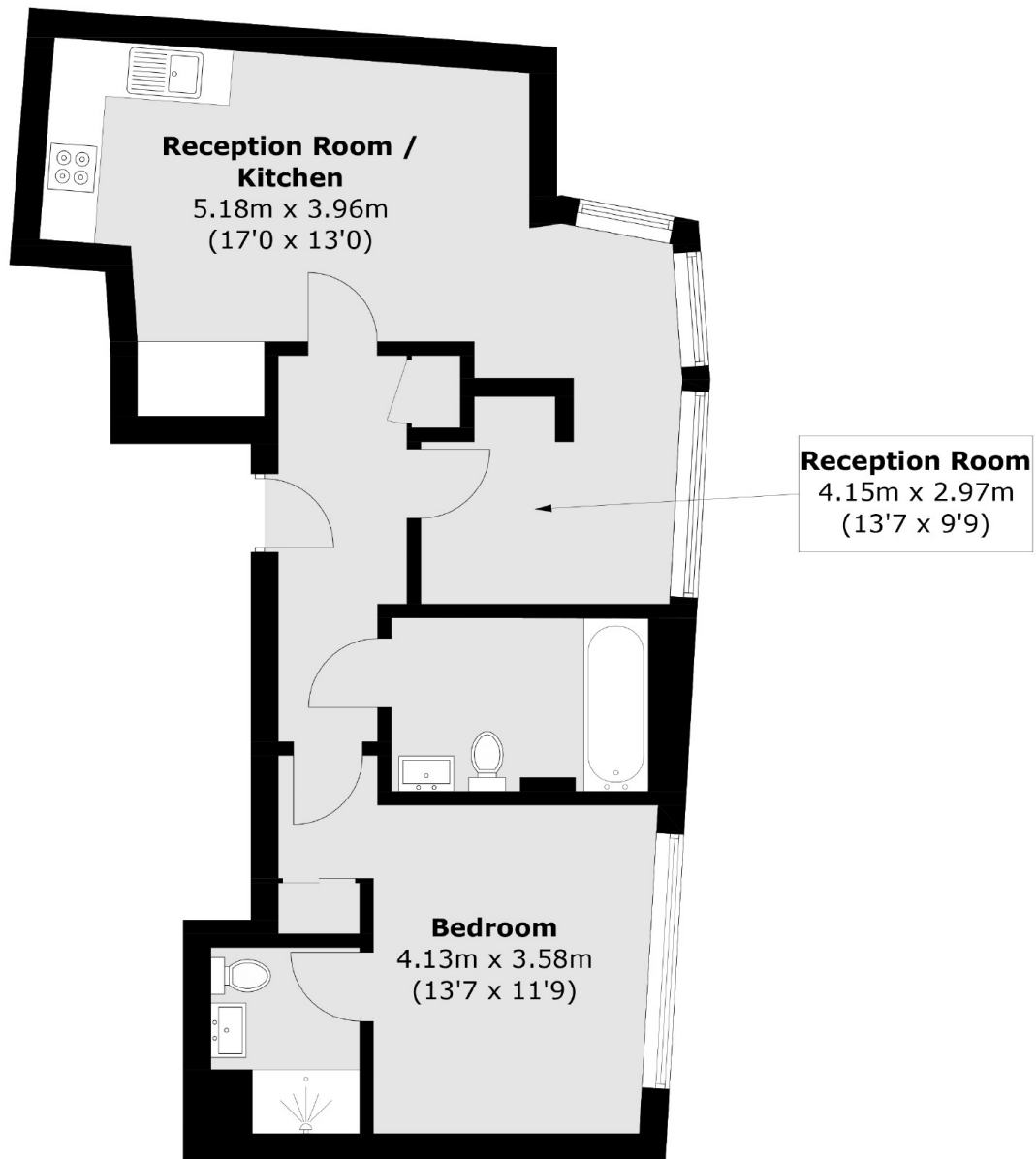
A spacious one bedroom apartment in a popular Clerkenwell development with lift access. This apartment has an open plan living room with a fully integrated kitchen and space to dine. The generous double bedroom has in-built storage and this area, along with the rest of the property benefits from a wealth of natural light from the large wall to wall windows.

St. Johns Place is set with a sought after location built on convenience with a wide array of restaurants, bars and further entertainment venue locally available. Farringdon Station is close by with access to the Elizabeth, Hammersmith and City, Circle and Metropolitan Lines, as well as Thameslink services. The City' is also within walking distance whilst Kings Cross St Pancras Station is one stop from Farringdon for easy access to the Eurostar terminal.

Features

- One bedroom
- Private Development
- Integrated Kitchen
- Sought After Location
- Chain Free
- Wooden Flooring

St. John's Place,
London, EC1M



Total area (approx.): 56.1 sq. m (603.9 sq. ft)