



## Wentworth Street, E1

£525,000

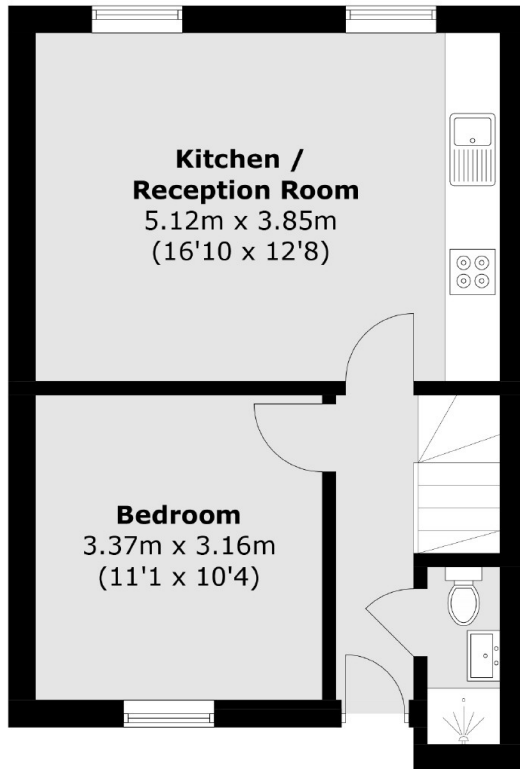
Two bedroom apartment with modern interiors set within a sought after central location. The property is arranged over two floors, the first floor gives access to the open plan living room with fully integrated kitchen with space to dine and the generous second bedroom and shower room. The second floor features a large principle bedroom which occupies the entire level with plenty of space for storage.

Situated on Wentworth Street, this property is moments from Spitalfields Market, Shoreditch, and the City of London. Convenient transport links, including Liverpool Street, Aldgate East, and Shoreditch High Street Stations, provide easy travel to all corners of the City and beyond.

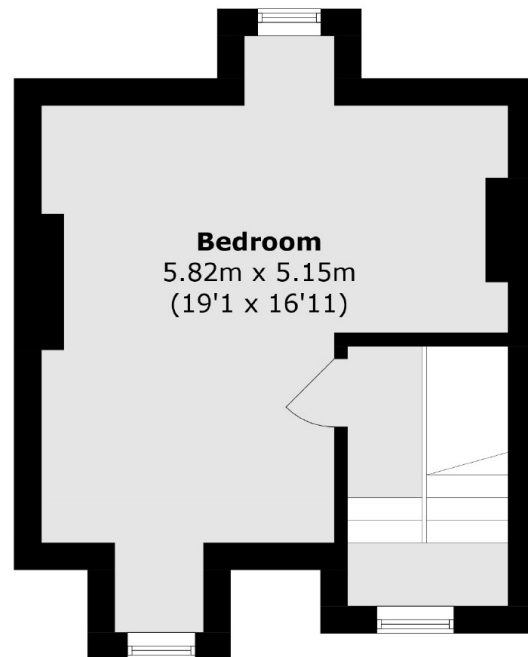
### Features

- Two Bedrooms
- Modern Interiors
- Sought After Location
- Gated Entrance
- Great Transport Links
- Dual Aspect

# Wentworth Street, London, E1



**Ground Floor**



**First Floor**

Total area (approx.): 66.0 sq. m (710.3 sq. ft)