



Wiltshire Row, N1

£400,000

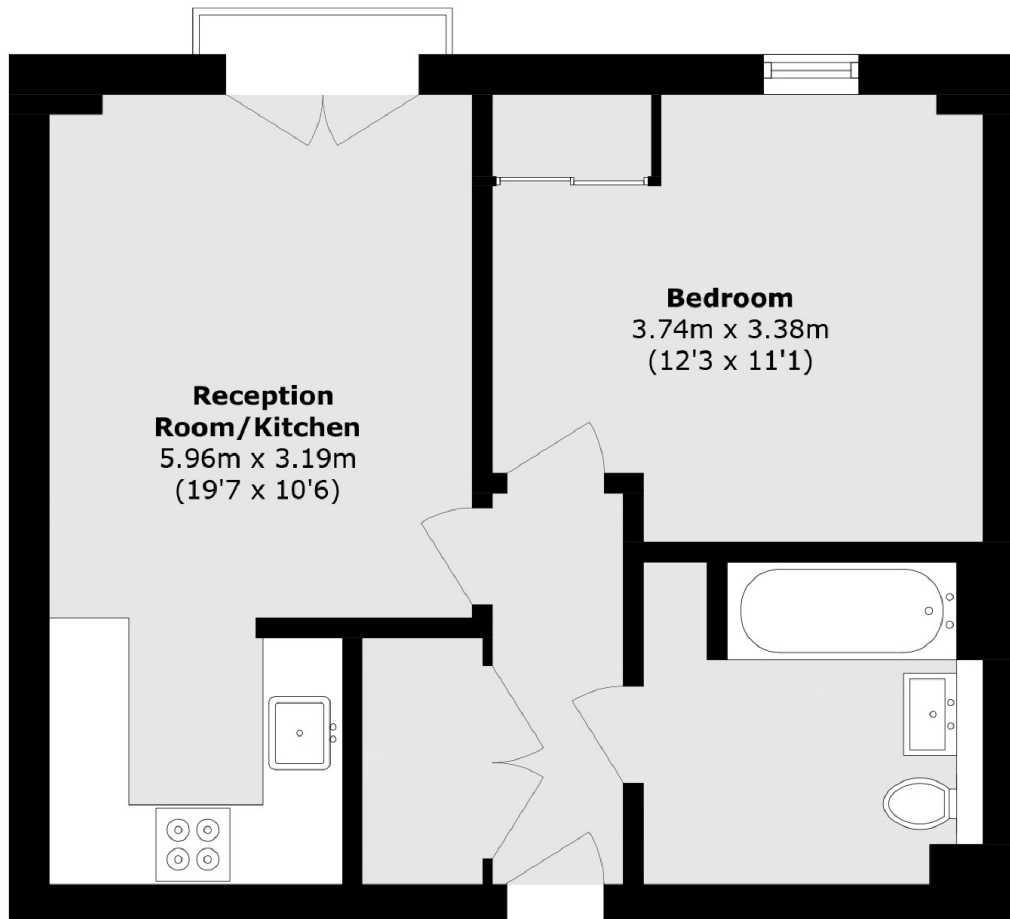
A well-presented one bedroom apartment situated on the third floor of this modern development. The property is in excellent condition throughout and offers an open plan kitchen/reception room, a double bedroom with storage and a modern bathroom.

Hoxton Wharf is ideally located for access to a wide range of local amenities and transport links with Angel and Old Street (Northern Line) stations both within easy reach. The shops, cafes and restaurants of Upper Street and Southgate Road are also within a short walking distance.

Features

- Canal Side Development
- Wooden Floors
- Floor to Ceiling Windows
- Juliet Balcony
- Lift Access
- Modern

Wiltshire Row,
London, N1



Total area (approx.): 41.9 sq. m (451.0 sq. ft)

Dexters

Shoreditch
44 Great Eastern Street
London
EC2A 3EP
Sales
0207 483 6371

Energy Rating: B. We aim to make our particulars both accurate and reliable. However they are not guaranteed; nor do they form part of an offer or contract. If you require clarification on any points then please contact us, especially if you're traveling some distance to view. Please note that appliances and heating systems have not been tested and therefore no warranties can be given as to their good working order.

 **RICS** | Regulated
Estate Agent
and Letting Agent

[dexters.co.uk](https://www.dexters.co.uk)