

Cyprus Street, E2

£575,000

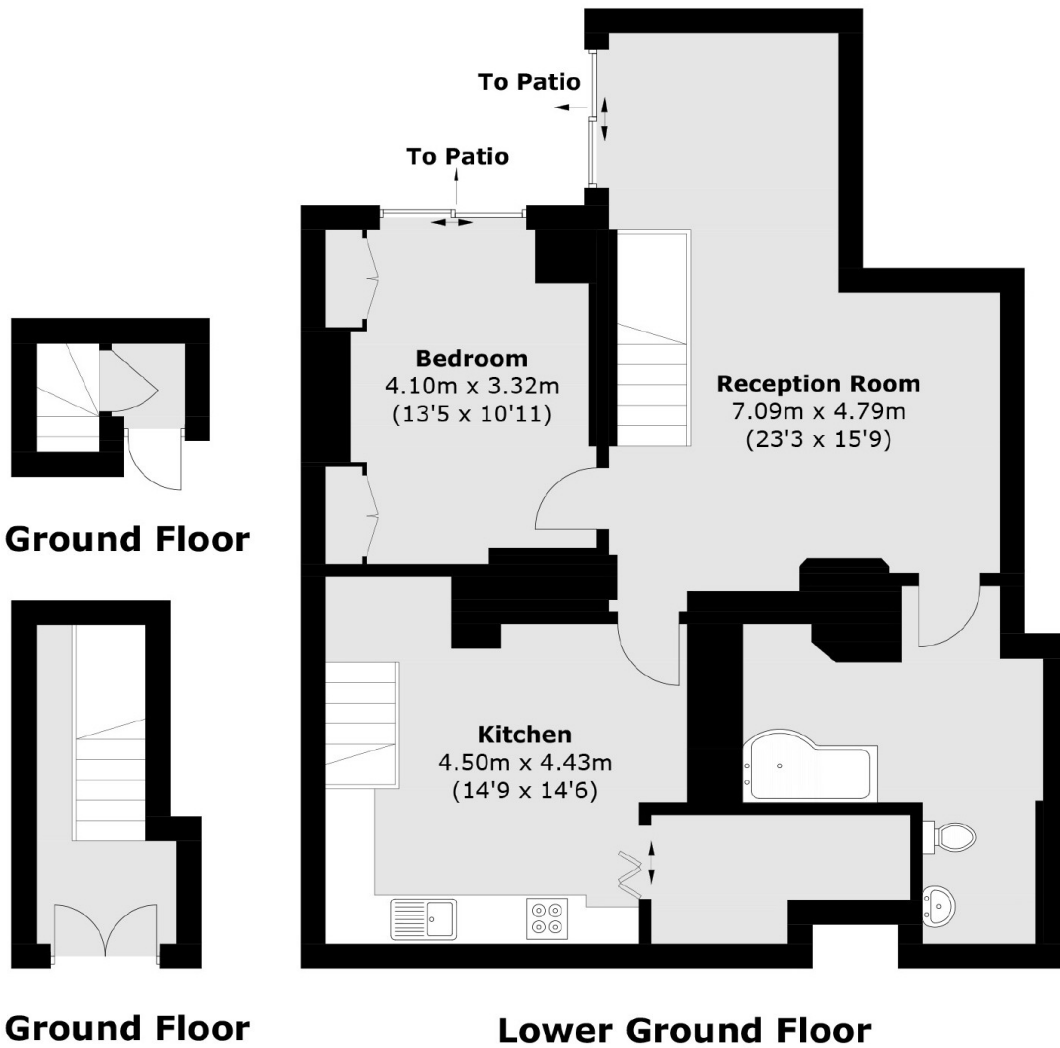
A spacious one bedroom property located on the sought after Cyprus Street. This property is arranged on the lower ground floor and enters onto a large kitchen/dining area with built in appliances and additional storage/pantry space. Beyond this is a good sized living area which provides access to the private patio to the rear, a double bedroom with, also with patio access and built in storage, and a family bathroom.

This property offers a quiet location on the popular Cyprus Street, an area with a vast selection of cafés, bars and boutiques as well as the green spaces of Victoria Park and Bethnal Green Gardens. Nearby transport links include Bethnal Green Station for Central line and Cambridge Heath for the Windrush line, as well as multiple bus routes.

Features

- Share of Freehold
- One Double Bedroom
- Private Patio
- Great Location
- Built In Storage
- Wood Flooring

Cyprus Street, London, E2



Total area (approx.): 87.0 sq. m (936.4 sq. ft)

Dexters

Shoreditch
44 Great Eastern Street
London
EC2A 3EP
Sales
0207 483 6371

Energy Rating: C. We aim to make our particulars both accurate and reliable. However they are not guaranteed; nor do they form part of an offer or contract. If you require clarification on any points then please contact us, especially if you're traveling some distance to view. Please note that appliances and heating systems have not been tested and therefore no warranties can be given as to their good working order.

 **RICS** | Regulated
Estate Agent
and Letting Agent

[dexters.co.uk](https://www.dexters.co.uk)