



Wenlock Road, N1  
£900,000

**Dexters**



## Wenlock Road, N1

A three-bedroom apartment with a balcony and terrace on the first floor in Spenlow Apartments. This property comprises of a sizeable, fully integrated kitchen/dining and living area with floor-to-ceiling windows leading into a west-facing balcony, a large main bedroom with en suite and large built-in wardrobe, another double bedroom with again access to the west-facing balcony, a bedroom with access to a large terrace and a spacious family bathroom with underfloor heating throughout. In addition, residents benefit from a concierge service, a residents' gym and safe bicycle storage.

The development is ideally located off City Road, close to the Regent's Canal footpath giving easy access to Angel, Shoreditch, Clerkenwell and the City for access to fashionable shops, bars, and restaurants and further entertainment venues. Shepherdess Walk Park is just moments from the building's entrance and the nearest Underground station is Old Street (Northern Line).

### Features

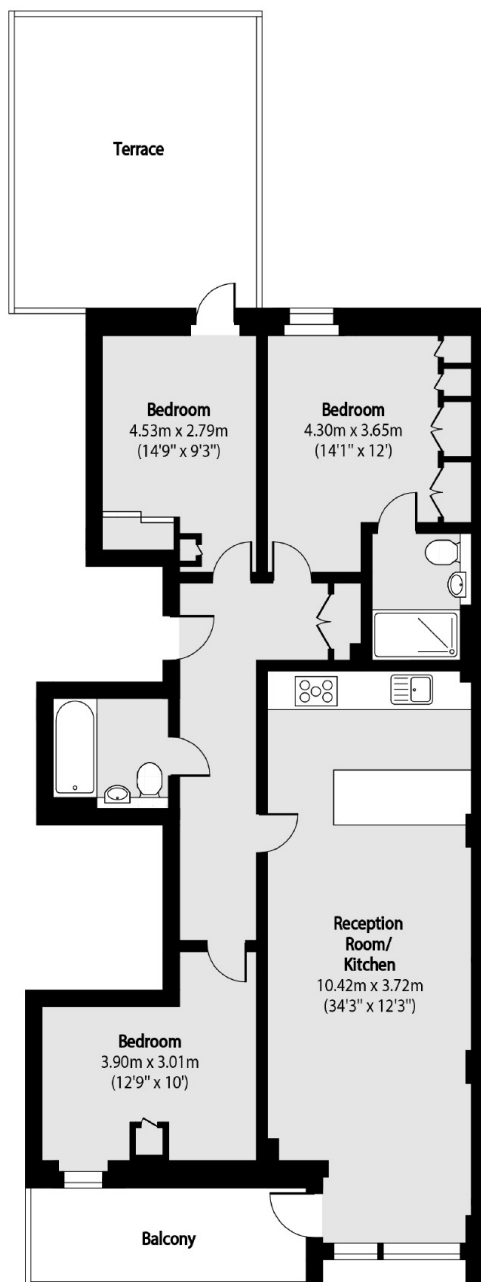
- Three Bedrooms
- Balcony and Large Terrace
- Two Bathrooms
- Underfloor Heating
- Sought After Location
- Concierge and Gym Services







# Wenlock Road, London, N1



Total area (approx): 100.76 sq m (1085 sq. ft)

Terrace total area (approx): 23.32 sq m (251 sq. ft)

Balcony total area (approx): 8.50 sq m (91 sq. ft)

## Dexters

Shoreditch  
44 Great Eastern Street  
London  
EC2A 3EP  
Sales  
0207 483 6371

Energy Rating: B. We aim to make our particulars both accurate and reliable. However they are not guaranteed; nor do they form part of an offer or contract. If you require clarification on any points then please contact us, especially if you're traveling some distance to view. Please note that appliances and heating systems have not been tested and therefore no warranties can be given as to their good working order.

 **RICS** | Regulated  
Estate Agent  
and Letting Agent

[dexters.co.uk](https://www.dexters.co.uk)