



## Folgate Street, E1 £650,000

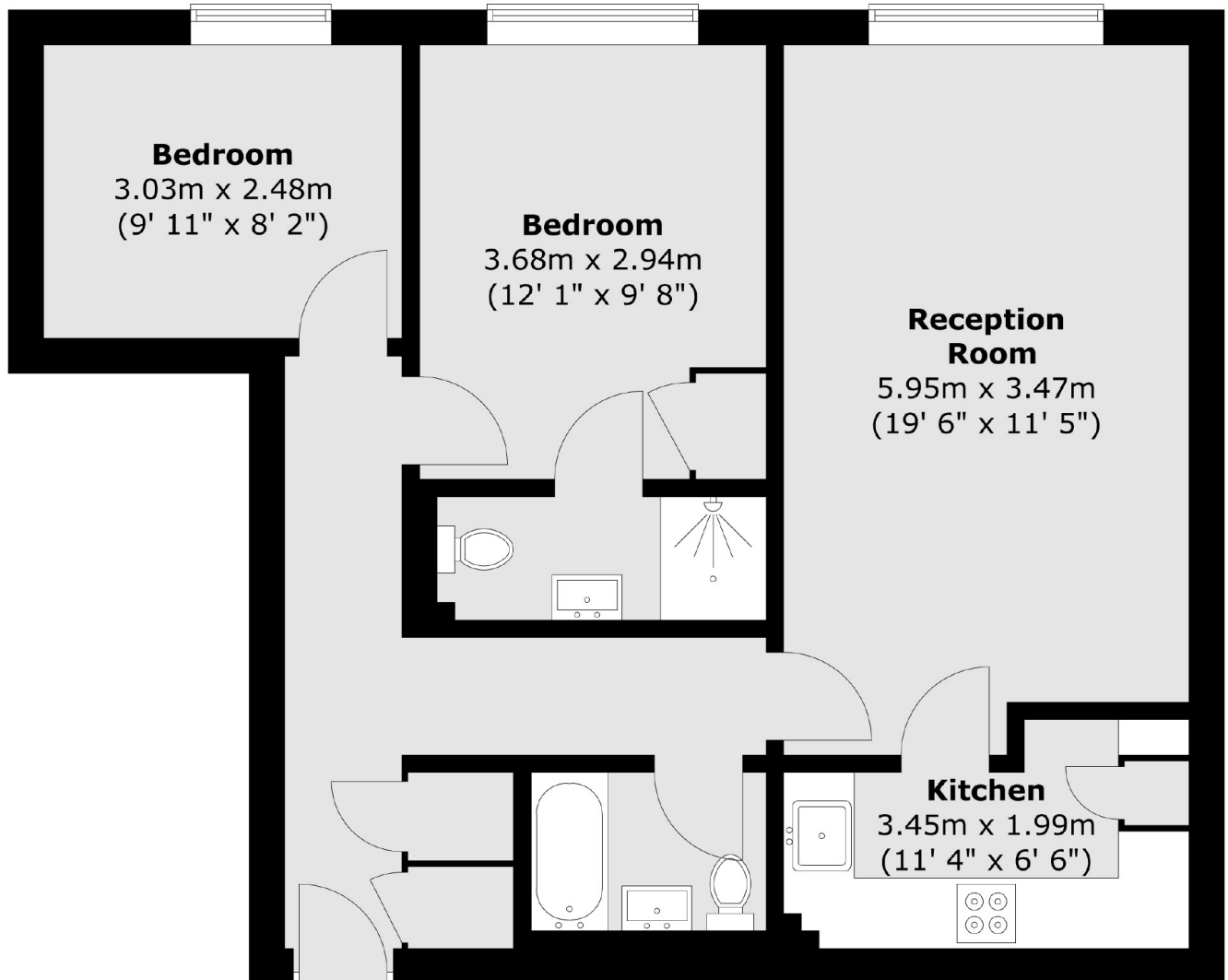
A two-bedroom, two-bathroom apartment on an elevated floor, ideally located next to Spitalfields Market. This apartment offers two double bedrooms, one with an en-suite bathroom, a modern family bathroom and plenty of built-in storage. The development also benefits from off street parking and concierge access.

Folgate Street is a cobbled stoned street very close to both Liverpool Street Station and Aldgate East Station. The area also offers a wide range of shops, restaurants and boutiques available in the nearby and popular Spitalfields Market and Shoreditch.

### Features

- Two Double Bedrooms
- Parking Space
- En Suite
- Communal Gardens
- Concierge
- Spitalfields Market

Folgate Street,  
London, E1



Total area (approx.) : 65 sq. m (696 sq. ft)