



## Commercial Road, E1

### £600,000

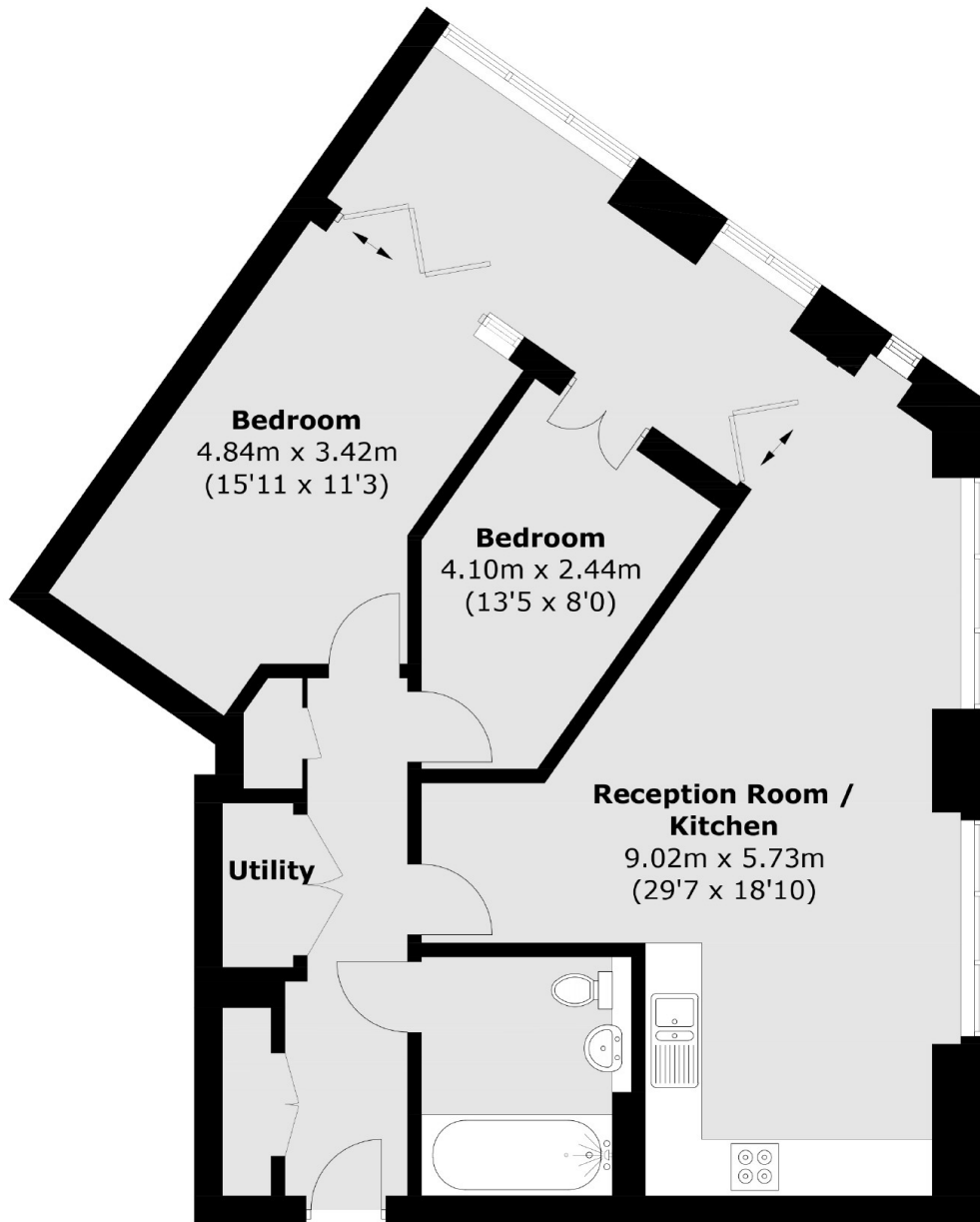
This two-bedroom apartment is located on the first floor and is comprised of a semi-open plan, fully equipped, contemporary kitchen, living and dining area, two double bedrooms, modern family bathroom and a spacious winter garden. The apartment comes complete with plenty of built-in storage. Aldgate Place benefits from landscaped gardens, 24-hour concierge, a fully equipped resident's gym and secure underground bicycle storage.

Conveniently located within walking distance to the City, Spitalfields Market, Tower Bridge and Shoreditch. Close to an array of shops, restaurants, bars and entertainment within easy reach. Located near four zone one underground stations (Aldgate, Aldgate East, Tower Hill, Liverpool St.), DLR in Tower Gateway and Liverpool Street and Fenchurch Street Rail all easily accessible.

### Features

- Two Bedrooms
- Floor to Ceiling Windows
- Resident Gym
- 24-Hour Concierge
- Secure Bicycle Storage
- Great Transport Links

Commercial Road,  
London, E1



## First Floor

Total area (approx.): 83.5 sq. m (898.8 sq. ft)

**Dexters**

Shoreditch  
44 Great Eastern Street  
London  
EC2A 3EP  
Sales  
0207 483 6371

Energy Rating: B. We aim to make our particulars both accurate and reliable. However they are not guaranteed; nor do they form part of an offer or contract. If you require clarification on any points then please contact us, especially if you're traveling some distance to view. Please note that appliances and heating systems have not been tested and therefore no warranties can be given as to their good working order.

 **RICS** | Regulated  
Estate Agent  
and Letting Agent

[dexters.co.uk](https://www.dexters.co.uk)