



## Daplyn Street, E1

### £520,000

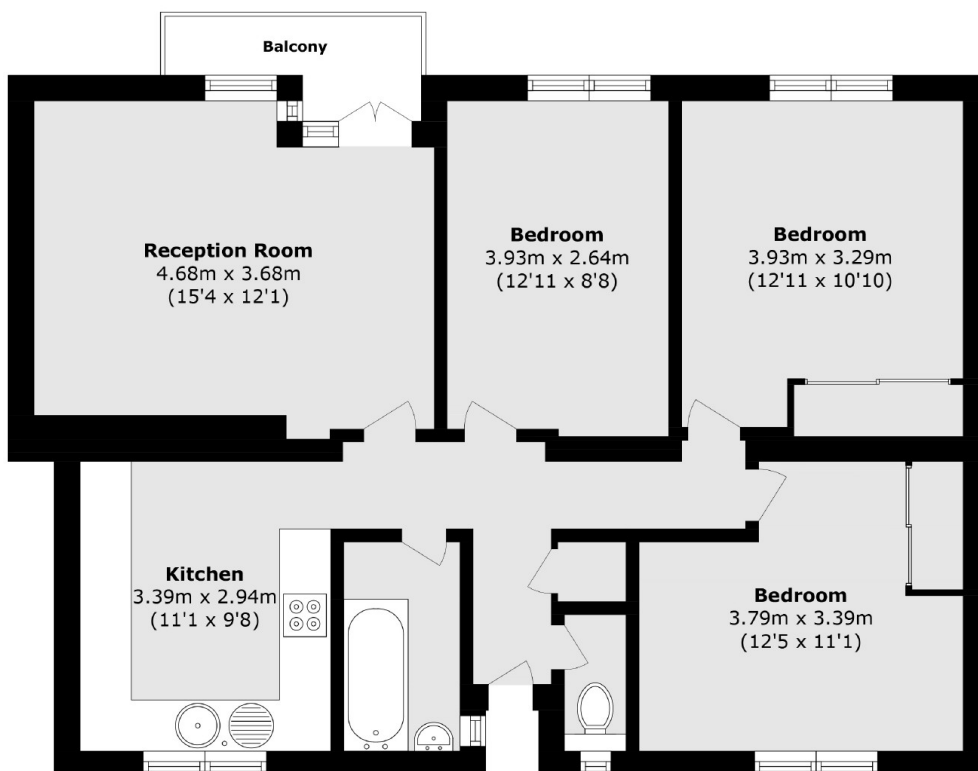
A three bedroom property set within a secure block in a popular location. The property has a large living room with access to a private balcony, a separate modern kitchen with fully integrated appliances, three double bedrooms, two of which have ample built in storage, an updated family bathroom and a separate WC. The apartment has a generous amount of natural light throughout and the block has lift access.

Daplyn Street is located moments from the amenities of Brick Lane and Shoreditch for a wealth of amenities such as boutique cafe's, restaurants, bars and further entertainment venues. The nearby Spitalfields and Columbia Road Flower markets offer unique shopping opportunities for locals and visitors. Convenient transport links are available via Aldgate East and Liverpool Street stations as the City is accessible quickly on foot, you also have access to Shoreditch High Street and Whitechapel stations (one stop to Canary Wharf) giving

### Features

- Three Double Bedrooms
- Secure Block
- Lift Access
- Modern Interiors
- Sought After Location
- Great Transport Links

# Daplyn Street, London, E1



Total area (approx.): 79.0 sq. m (850.3 sq. ft)

Balcony area (approx.): 3.0 sq. m (32.2 sq. ft)

## Dexters

Shoreditch  
44 Great Eastern Street  
London  
EC2A 3EP  
Sales  
0207 483 6371

Energy Rating: E. We aim to make our particulars both accurate and reliable. However they are not guaranteed; nor do they form part of an offer or contract. If you require clarification on any points then please contact us, especially if you're traveling some distance to view. Please note that appliances and heating systems have not been tested and therefore no warranties can be given as to their good working order.

 **RICS** | Regulated  
Estate Agent  
and Letting Agent

[dexters.co.uk](https://www.dexters.co.uk)