



## Fairclough Street, E1

### £700,000

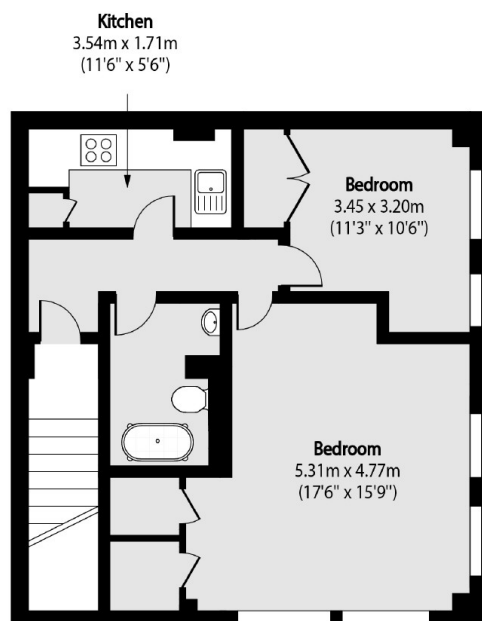
Large two bedroom property arranged over two floors set within a sought after warehouse conversion. You enter the property and enter the properties large open plan living room, with space to dine, the Kitchen has fully integrated appliances. This area has plenty of storage space and a modern shower-room. The first floor of the property has the two large double bedrooms with in-built storage, a modern family bathroom and a fully integrated kitchenette allowing both floors of the property to be self contained if the owner requires this. The entire property benefits from generous natural light from the large sashed windows as well as having other in-fitting period features such as the exposed brick walls adding tons of character to this property.

Fairclough Street is located within close proximity to the vibrant Brick Lane and is close to St Katharine Docks, where you have a large variety of restaurants and bars overlooking the marina, not to mention numerous transport links at Whitechapel, Aldgate East and Tower Hill.

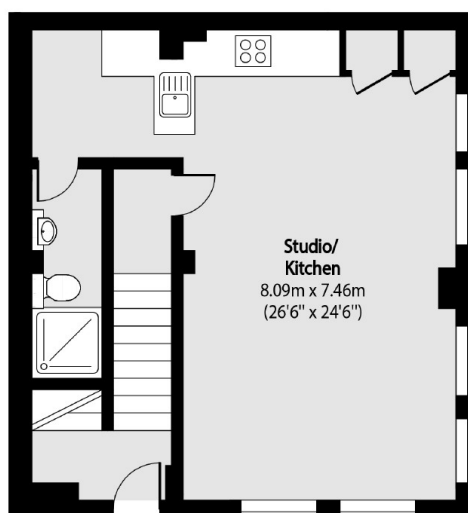
### Features

- Two Double Bedrooms
- Arranged Over Two Floors
- Warehouse Conversion
- Period Features
- Sought After Location
- Private Entrance

# Fairclough Street, London, E1



First Floor



Lower Ground Floor

Total area (approx): 121.79 sq m (1311 sq. ft)