



## Spelman Street, E1

### £300,000

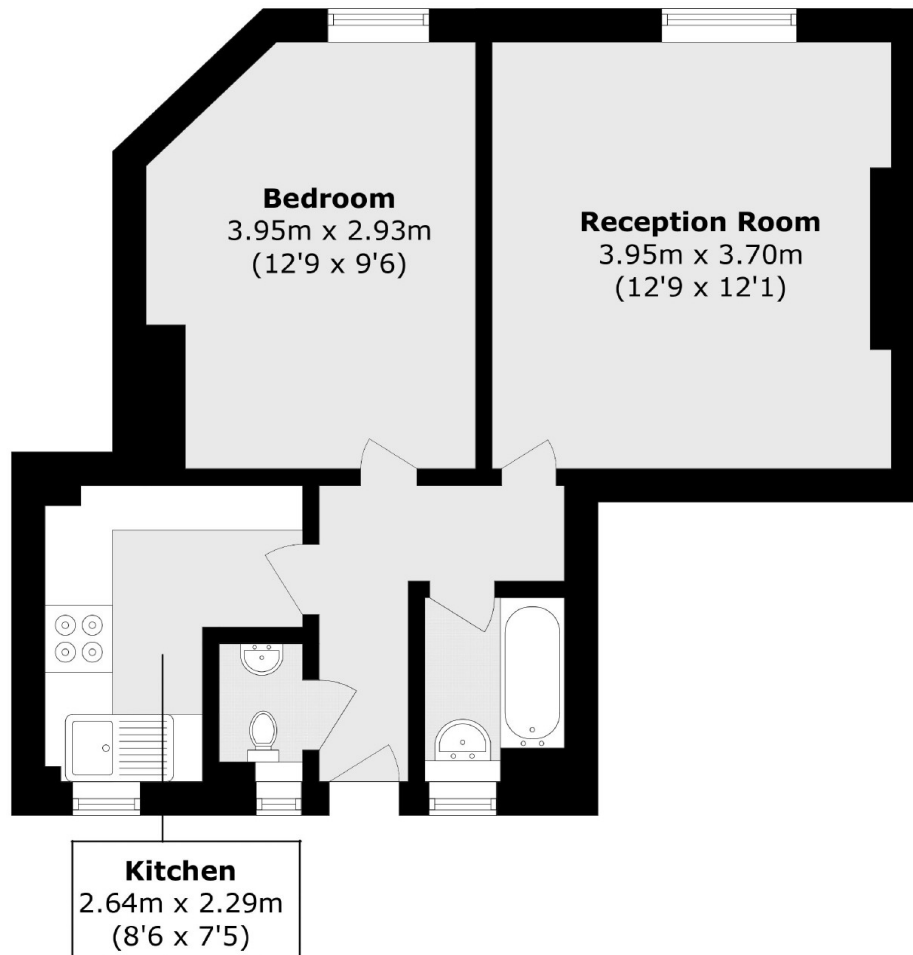
A newly renovated one bedroom apartment in a secure block and popular location. The property has a large, bright living room with space to dine, a modern separate kitchen with fully integrated appliances, a large double bedroom with ample storage space, a bathroom and separate WC. The entire apartment benefits from a wealth of natural light from the properties elevated height and large windows.

Spelman Street is set moments away from the amenities of Brick Lane, Shoreditch, Spitalfields and the City for the wide range of popular restaurants, bars, boutique café's and shopping venues. The area is well connected as transport links include Whitechapel, Aldgate and Liverpool Street stations for convenient commute to all corners of the City and beyond.

### Features

- One Bedroom
- Recently Renovated
- Bright Interiors
- Secure Block
- Lift Access
- Great Location

Spelman Street,  
London, E1



Total area (approx.): 38.7 sq. m (416.5 sq. ft)