



Chilton Street, E2
£850,000

Dexters



Chilton Street, E2

A three bedroom freehold townhouse with two bathrooms located in Bethnal Green. The property has a private driveway leading into the property. The ground floor consists of an open plan kitchen/diner with integrated appliances which opens out to the rear garden kept in great order with a slick decking, this floor also has a full shower room. The first floor has a large bright living room and one of the double bedrooms and the top floor provides two more double bedrooms, including the principal bedroom as well as the family bathroom.

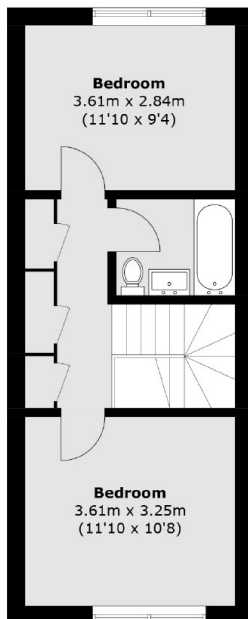
Located just off Brick Lane, this property is only a short distance from a vast selection of restaurants, bars, cafés and boutiques, as well as the green spaces of Weavers Fields and Spitalfields. Nearby transport links include Shoreditch High Street (Windrush). Bethnal Green (Central) and Old Street (Northern) stations, and multiple bus routes.

Features

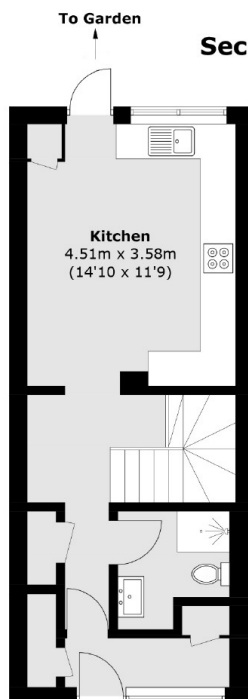
- Three Double Bedrooms
- Decked Rear Garden
- Freehold Townhouse
- Two Bathrooms
- Modern Kitchen
- Sought After Location



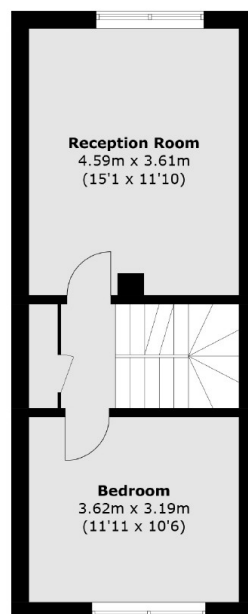
Chilton Street, London, E2



Second Floor



Ground Floor



First Floor

Total area (approx.): 106.6 sq. m (1,147.5 sq. ft)