



Commercial Road, E1

£520,000

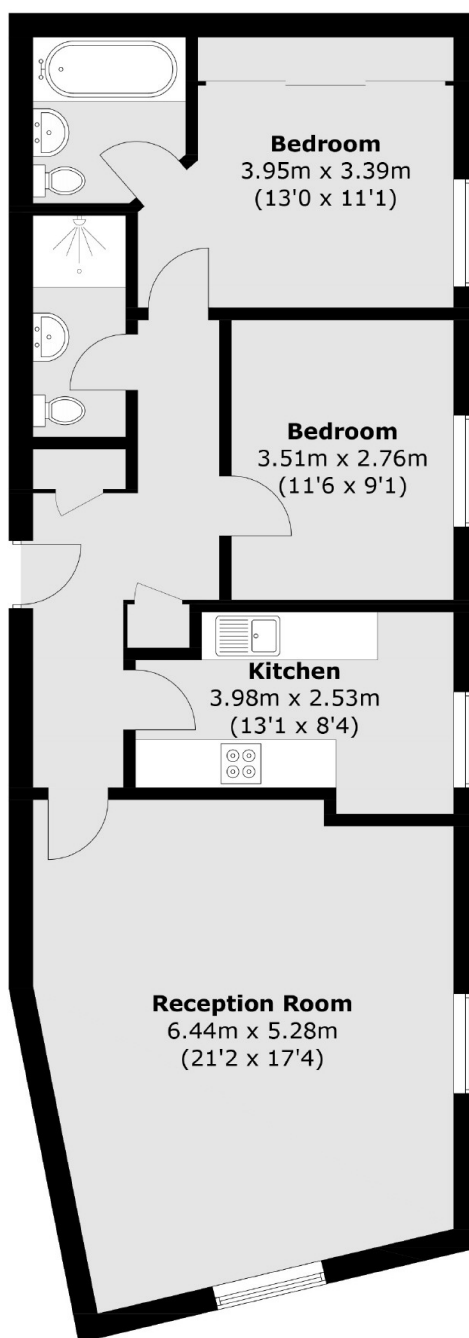
A two bedroom, two bathroom apartment situated on the eighth floor of a secure building with concierge and includes parking. The property comprises of an open plan kitchen/reception room, a principal bedroom with en-suite, second double bedroom and a family bathroom.

The apartment is ideally located on Commercial Road within easy reach of the City's Square Mile, St. Katherine's Dock, and Brick Lane, Spitalfields and Shoreditch. Both Aldgate East and Aldgate Stations Underground stations are within walking distance, whilst both Whitechapel and Liverpool Street stations are also within close proximity.

Features

- Two Bedroom
- Two Bathroom
- Concierge
- Gym
- Secure Car Parking
- Communal Roof Terrace

Commercial Road, London, E1



Eighth Floor

Total area (approx.): 80.2 sq. m (863.3 sq. ft)