



Gathorne Street, E2

£750,000

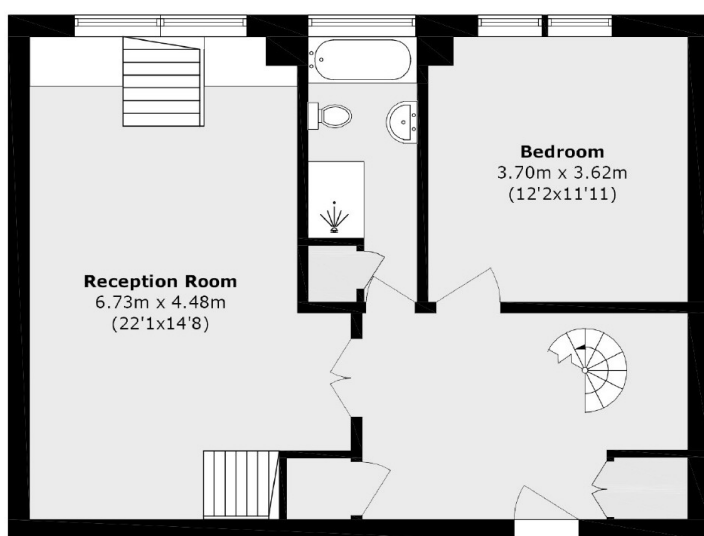
A two bedroom property set within an architecturally appealing school conversion in the heart of Bethnal Green. The property enters onto a large entrance hall with plenty of storage which leads to the spacious second bedroom, the updated family bathroom and the main living room which benefits from a wealth of natural light made possible by the areas double height ceiling. On the upper level, accessible via the stairs found in the living room or the spiral staircase, is the modern kitchen with designated dining space and the principal bedroom which features a significant amount of bespoke built in storage space.

This property gives the rare combination of space, character, and modern living in one of London's most sought-after locations. Ideally located just moments from the peaceful Regent's Canal and the open green spaces of Victoria Park, as well as the vibrant local amenities and convenient transport links of Bethnal Green.

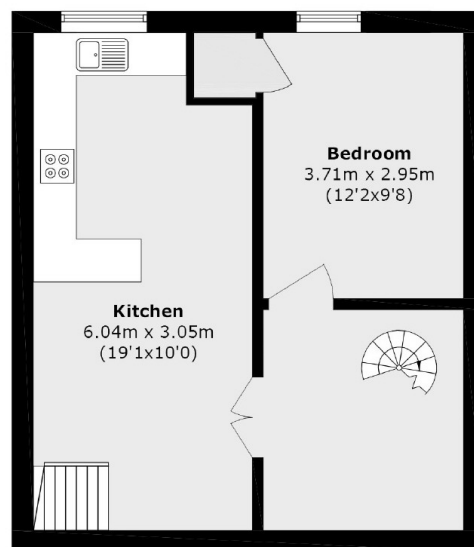
Features

- Two Double Bedrooms
- School Conversion
- Modern Interiors
- Share of Freehold
- Sought After Location
- Two Allocated Parking Spaces

Gathorne Street, London, E2



Third Floor



Fourth Floor

Total area (approx.): 103.3 sq. m (1111.9 sq. ft)