



Osier Street, E1

£475,000

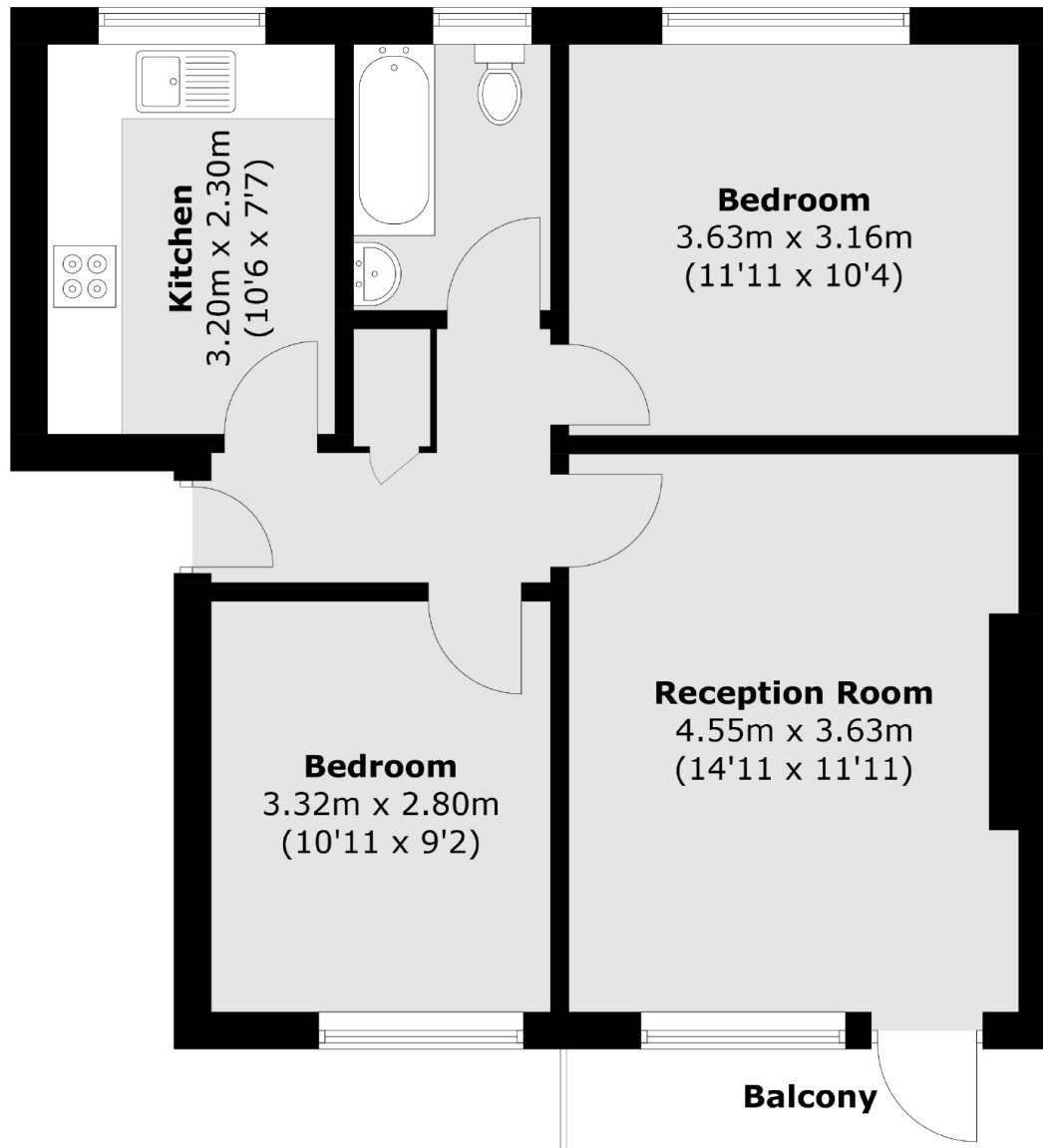
A bright two double bedroom apartment located in the 1930's Art Deco block Osier Court. The apartment benefits from two double bedrooms, separate kitchen, a large reception room with access to the private, first floor, balcony, and family bathroom. The property retains many of the original features including wooden flooring, high ceilings and Crittal Windows and secure entry.

Osier Court is located on a quiet residential street and is 0.1 miles from Stepney Green Tube Station and under half a mile to Bethnal Green Tube Station. Whitechapel Station is 0.6 miles away for access to the new Elizabeth Line.

Features

- Two Double Bedrooms
- Extended Lease
- Private Balcony
- Crittal Windows
- Chain Free
- Art Deco

Osier Street,
London, E1



First Floor

Total area (approx.): 55.4 sq. m (596.3 sq. ft)
Balcony: 3.1 sq. m (33.4 sq. ft)