



Hoxton Square, N1

£700,000

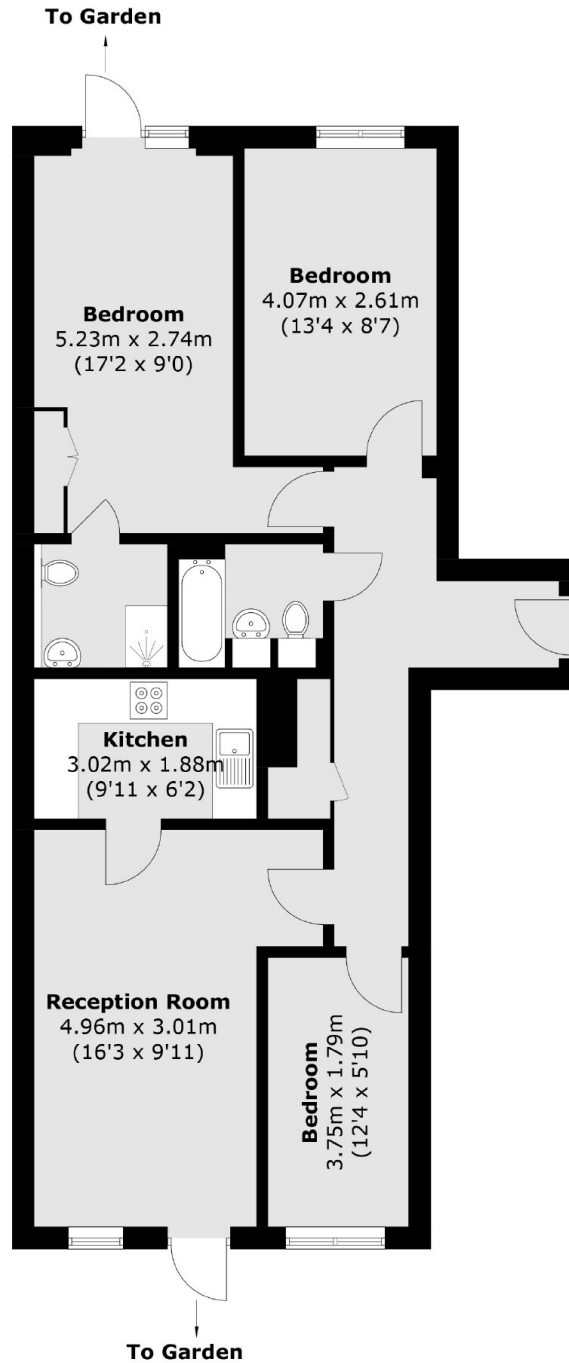
A three bedroom, two bathroom property with access to two large patio spaces located on the popular Hoxton Square. The property has a large semi-open plan living area with space to dine and a kitchen with fully integrated appliances. This area leads out to the property's first large patio space that also extends into the developments communal garden area. The property has three double bedrooms, two of which have ample built in storage, the principal bedroom has an en-suite as well as exclusive access to a private patio area. The development is a secure block with access to a day time porter and one secure underground parking space.

Hoxton Square is one of the areas most sought after locations, surrounded by an array of restaurants, bars, boutique café's and shopping venues found in Hoxton, Shoreditch and Angel. Convenient transport links include Old Street, Liverpool Street and Shoreditch High Street stations for access to all corners of the City and beyond.

Features

- Three Bedrooms
- Two Bathrooms
- Two Private Patio Spaces
- Sought After Location
- Secure Underground Parking
- Daytime Porter

Hoxton Square, London, N1



Total area (approx.): 79.5 sq. m (855.7 sq. ft)

Dexters

Shoreditch
44 Great Eastern Street
London
EC2A 3EP
Sales
0207 483 6371

Energy Rating: . We aim to make our particulars both accurate and reliable. However they are not guaranteed; nor do they form part of an offer or contract. If you require clarification on any points then please contact us, especially if you're traveling some distance to view. Please note that appliances and heating systems have not been tested and therefore no warranties can be given as to their good working order.

 **RICS** | Regulated
Estate Agent
and Letting Agent

[dexters.co.uk](https://www.dexters.co.uk)