



## Candle Street, E1

£450,000

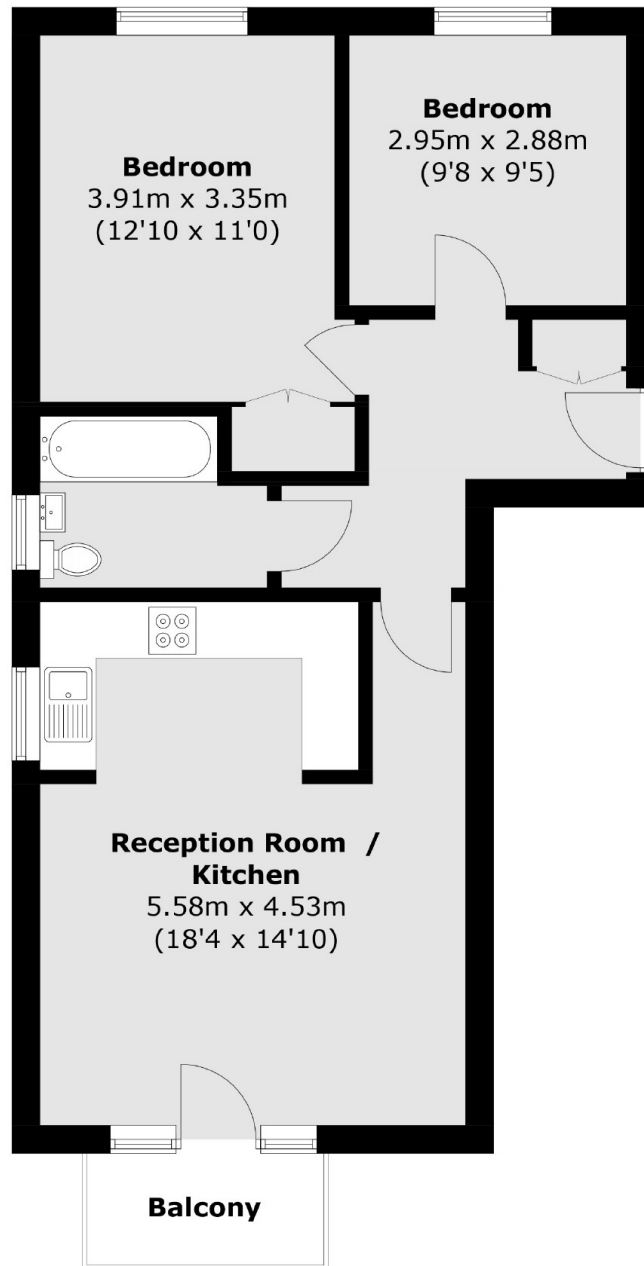
A modern, purpose built, two bedroom apartment offering a generous living space and set within a popular, secure development. The property has a large, semi-open plan living room with space to dine and a recently renovated, fully integrated kitchen. The property has two double bedrooms, the principal bedroom has ample built in storage and a modern family bathroom. The property also has a secure underground parking space that is allocated to the property.

Conveniently situated between the business districts of Canary Wharf and the City with Stepney Green and Mile End Underground and Limehouse DLR stations nearby. The property also benefits from being very close to the famous Victoria Park.

### Features

- Two Bedrooms
- Bright Interiors
- Recently Renovated
- Secure underground parking space
- Private Balcony
- Great Transport Links

Candle Street,  
London, E1



## First Floor

Total area (approx.): 61.0 sq. m (656.6 sq. ft)  
Balcony : 3.0 sq. m (32.3 sq. ft)

**Dexters**

Shoreditch  
44 Great Eastern Street  
London  
EC2A 3EP  
Sales  
0207 483 6371

Energy Rating: B. We aim to make our particulars both accurate and reliable. However they are not guaranteed; nor do they form part of an offer or contract. If you require clarification on any points then please contact us, especially if you're traveling some distance to view. Please note that appliances and heating systems have not been tested and therefore no warranties can be given as to their good working order.

 **RICS** | Regulated  
Estate Agent  
and Letting Agent

dexters.co.uk