



Candle Street, E1

£450,000

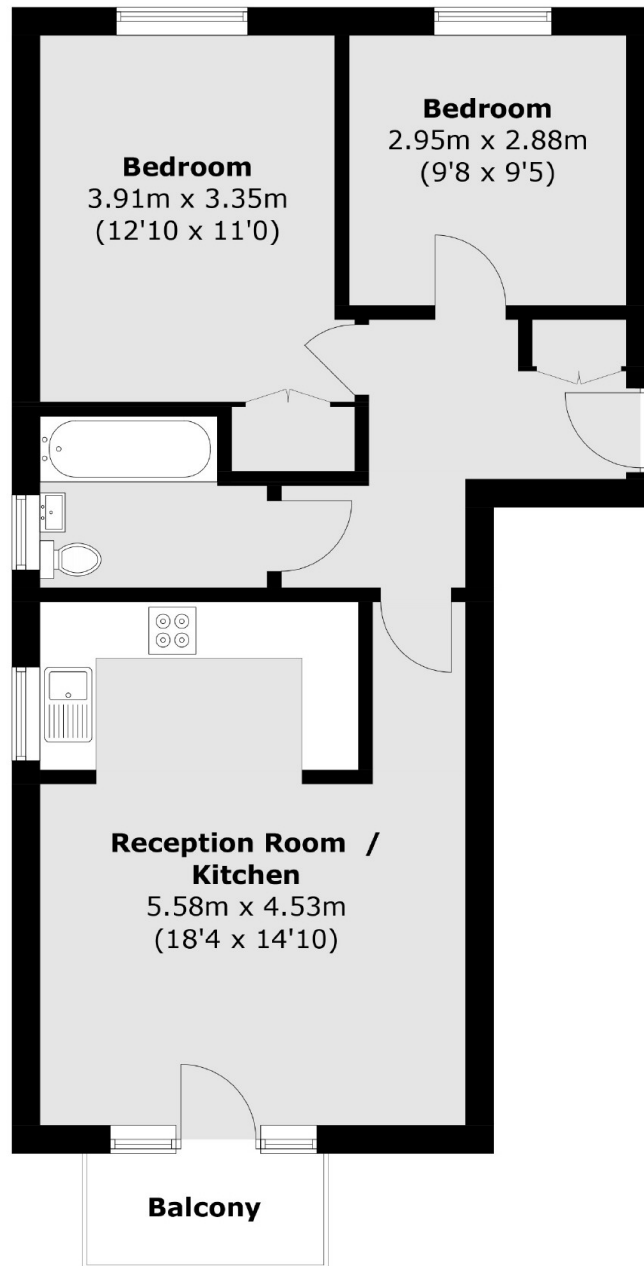
A modern, purpose built, two bedroom apartment offering a generous living space and set within a popular, secure development. The property has a large, semi-open plan living room with space to dine and a recently renovated, fully integrated kitchen. The property has two double bedrooms, the principal bedroom has ample built in storage and a modern family bathroom. The property also has a secure underground parking space that is allocated to the property.

Conveniently situated between the business districts of Canary Wharf and the City with Stepney Green and Mile End Underground and Limehouse DLR stations nearby. The property also benefits from being very close to the famous Victoria Park.

Features

- Two Bedrooms
- Bright Interiors
- Recently Renovated
- Secure Underground Parking
- Private Balcony
- Great Transport Links

Candle Street, London, E1



First Floor

Total area (approx.): 61.0 sq. m (656.6 sq. ft)
Balcony : 3.0 sq. m (32.3 sq. ft)