



Candle Street, E1

£475,000

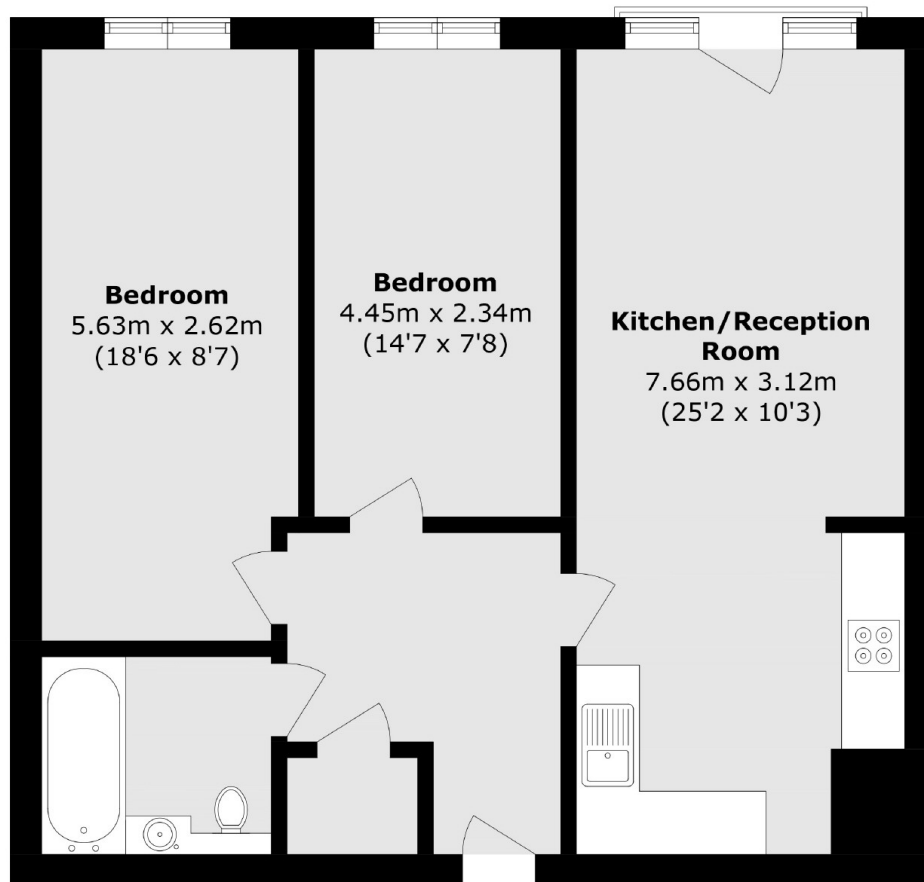
A two bedroom, top floor apartment in a sought after development overlooking maintained communal gardens. The property has a large, open plan living room with space to dine and a fully integrated kitchen, which leads out onto the properties east facing Juliette balcony. The property has two generously sized double bedrooms and a modern fitted family bathroom. The apartment has been renovated throughout, has a wealth of natural light from its large, east facing windows and has the rare addition of having an air conditioning unit installed.

Conveniently situated between the business districts of Canary Wharf and the City with Stepney Green and Mile End Underground and Limehouse DLR stations nearby. The property also benefits from being just 0.2 miles from Mile End Park.

Features

- Two Double Bedrooms
- Top Floor Apartment
- Modern Interiors
- Air Conditioned
- East Facing
- Step Free Lift Access

Candle Street, London, E1



Total area (approx.): 62.8 sq. m (675.9 sq. ft)