



Candle Street, E1

£450,000

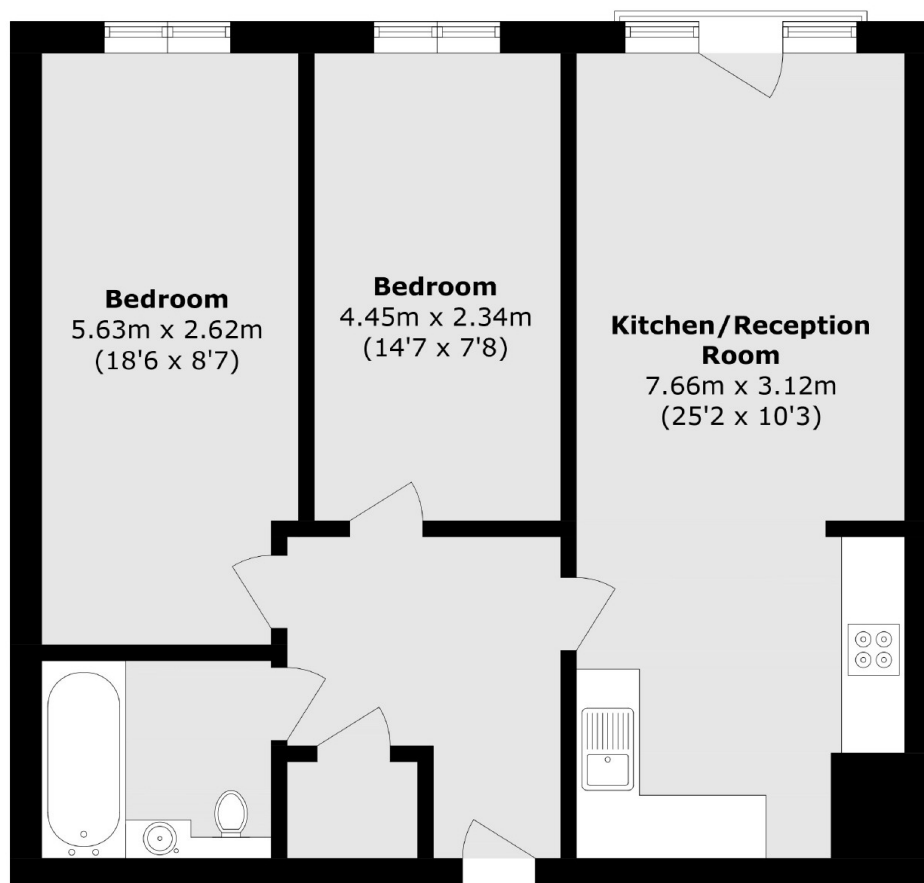
A two bedroom, top floor apartment in a sought after development overlooking maintained communal gardens. The property has a large, open plan living room with space to dine and a fully integrated kitchen, which leads out onto the properties east facing Juliette balcony. The property has two generously sized double bedrooms and a modern fitted family bathroom. The apartment has been renovated throughout, has a wealth of natural light from its large, east facing windows and has the rare addition of having an air conditioning unit installed.

Conveniently situated between the business districts of Canary Wharf and the City with Stepney Green and Mile End Underground and Limehouse DLR stations nearby. The property also benefits from being just 0.2 miles from Mile End Park.

Features

- Two Double Bedrooms
- Top Floor Apartment
- Modern Interiors
- Air Conditioned
- East Facing
- Step Free Lift Access

Candle Street, London, E1



Total area (approx.): 62.8 sq. m (675.9 sq. ft)

Dexters

Shoreditch
44 Great Eastern Street
London
EC2A 3EP
Sales
0207 483 6371

Energy Rating: B. We aim to make our particulars both accurate and reliable. However they are not guaranteed; nor do they form part of an offer or contract. If you require clarification on any points then please contact us, especially if you're traveling some distance to view. Please note that appliances and heating systems have not been tested and therefore no warranties can be given as to their good working order.

 **RICS** | Regulated
Estate Agent
and Letting Agent

[dexters.co.uk](https://www.dexters.co.uk)