



## Columbia Road, E2

£370,000

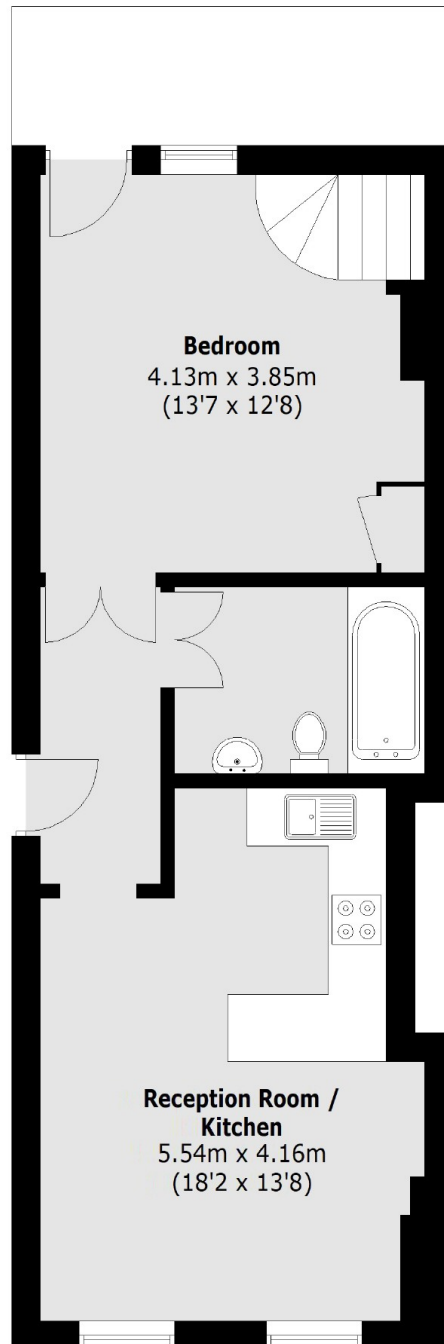
Set within a historic period development in one of the areas most sought after streets. The property features a bright open-plan kitchen leading to the reception room with large, restored feature windows which allow plenty of natural light. The double bedroom has access to the private balcony overlooking Columbia Road. The generously-sized bathroom has a charming white Victorian suite installed, including traditional shower and tap fixture over the bath. The building benefits from caretaker service and lift facilities.

The block was built in 1872 and is Grade II listed by English Heritage. Columbia Road flower market, Brick Lane, Hoxton Square and Broadway markets are all within a short walk and convenient transport links include, Old Street, Liverpool Street and Shoreditch High Street Stations and plenty of bus routes into the City.

### Features

- One Double Bedroom
- Grade II Listed Building
- Bright Interiors
- Sought After Location
- Lift Access
- Private Balcony

Columbia Road,  
London, E2



Total area (approx.): 46.9 sq. m (504.8 sq. ft)  
External area: 6.7 sq. m (72.1 sq. ft)

**Dexters**

Shoreditch  
44 Great Eastern Street  
London  
EC2A 3EP  
Sales  
0207 483 6371

Energy Rating: C. We aim to make our particulars both accurate and reliable. However they are not guaranteed; nor do they form part of an offer or contract. If you require clarification on any points then please contact us, especially if you're traveling some distance to view. Please note that appliances and heating systems have not been tested and therefore no warranties can be given as to their good working order.

 **RICS** | Regulated  
Estate Agent  
and Letting Agent

[dexters.co.uk](https://www.dexters.co.uk)