



## Plumbers Row, E1

### £400,000

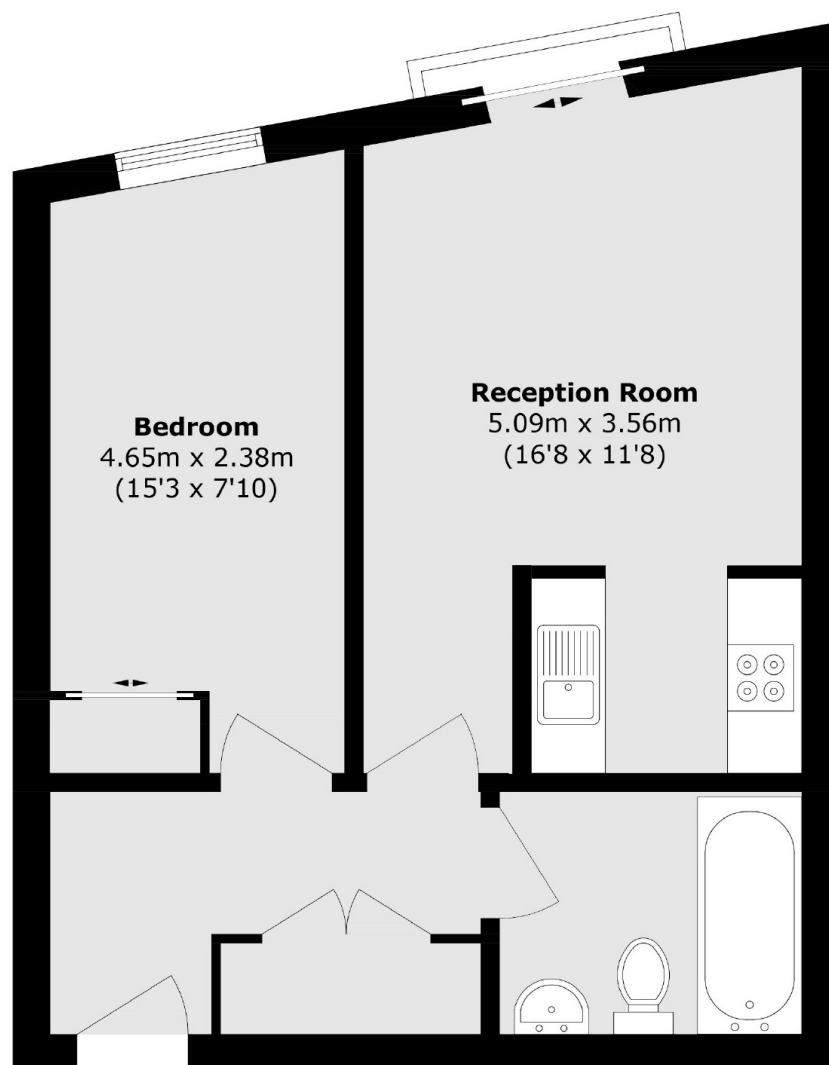
A spacious one bedroom apartment in a sought after location presented with modern interiors. This one bedroom apartment set on the 4th floor has a semi open plan living room with space to dine and a fully integrated kitchen. This area also gives access to the Juliette balcony. The large double bedroom has ample in-built storage and the whole apartment benefits from a wealth of natural light. The development gives access to a 24hr concierge service, a residential gym and a roof terrace exclusive to this building. Secure bike storage is available for residents also.

This property is situated in a sought after location a short distance from a range of shops, restaurants, bars and other amenities that can be found in Aldgate, Spitalfields Market, the City and Shoreditch. Multiple transport links are close by, stations include Aldgate, Whitechapel and Liverpool Street stations allowing access to all corners of the City and beyond.

### Features

One Bedroom Apartment  
Fully Integrated Kitchen  
Juliet Balcony  
Sought After Location  
Residents Only Facilities  
Great Transport Links

# Plumbers Row, London, E1



Total area (approx.): 44.1 sq. m (474.6 sq. ft)

## Dexters

Shoreditch  
44 Great Eastern Street  
London  
EC2A 3EP  
Sales  
0207 483 6371

Energy Rating: . We aim to make our particulars both accurate and reliable. However they are not guaranteed; nor do they form part of an offer or contract. If you require clarification on any points then please contact us, especially if you're traveling some distance to view. Please note that appliances and heating systems have not been tested and therefore no warranties can be given as to their good working order.

 **RICS** | Regulated  
Estate Agent  
and Letting Agent

[dexters.co.uk](https://www.dexters.co.uk)