



Poole Street, N1

£500,000

A modern, one bedroom apartment located in Gainsborough Studios, formerly Alfred Hitchcock's film studio. This property consists of a bright, open plan reception/kitchen with modern, built in appliances and large windows, a spacious double bedroom and a contemporary family bathroom. The development also provides a concierge service.

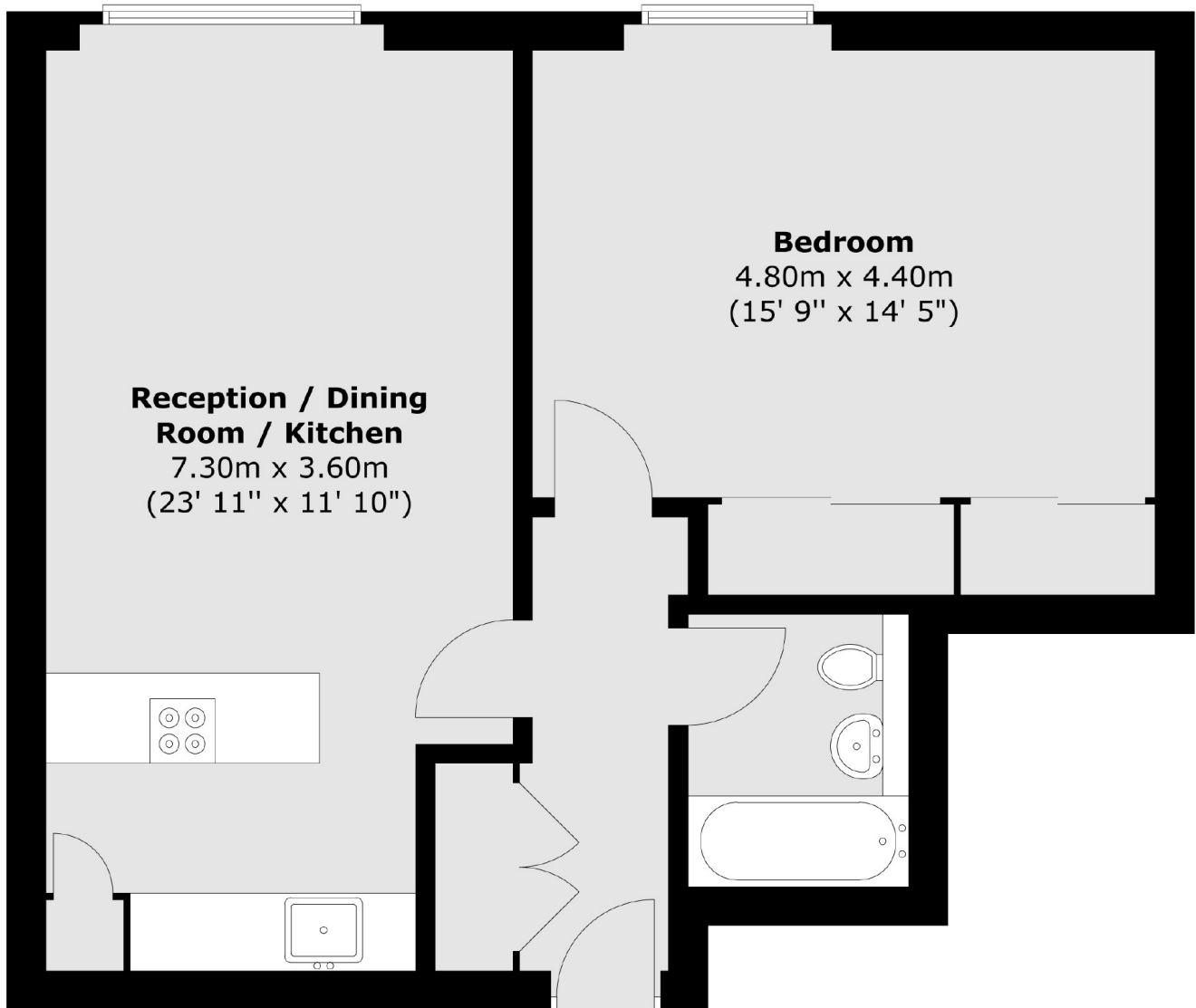
Conveniently located near both Old Street (Northern line, National Rail) and Hoxton (Windrush line), travel throughout the City is easy. This popular, canal-side development also benefits from proximity to Shoreditch Park and a number of bars and restaurants.

Features

- One Double Bedroom
- Popular Development
- Concierge
- Built In Storage
- Great Location
- Modern Design

Poole Street,
London, N1

First Floor



Total area (approx.) : 54.9 sq. m (591 sq. ft)

Dexters

Shoreditch
44 Great Eastern Street
London
EC2A 3EP
Sales
0207 483 6371

Energy Rating: C. We aim to make our particulars both accurate and reliable. However they are not guaranteed; nor do they form part of an offer or contract. If you require clarification on any points then please contact us, especially if you're traveling some distance to view. Please note that appliances and heating systems have not been tested and therefore no warranties can be given as to their good working order.

 **RICS** | Regulated
Estate Agent
and Letting Agent

[dexters.co.uk](https://www.dexters.co.uk)