



Poole Street, N1

£475,000

A modern, one bedroom apartment located in Gainsborough Studios, formerly Alfred Hitchcock's film studio. This property consists of a bright, open plan reception/kitchen with modern, built in appliances and large windows, a spacious double bedroom and a contemporary family bathroom. The development also provides a concierge service.

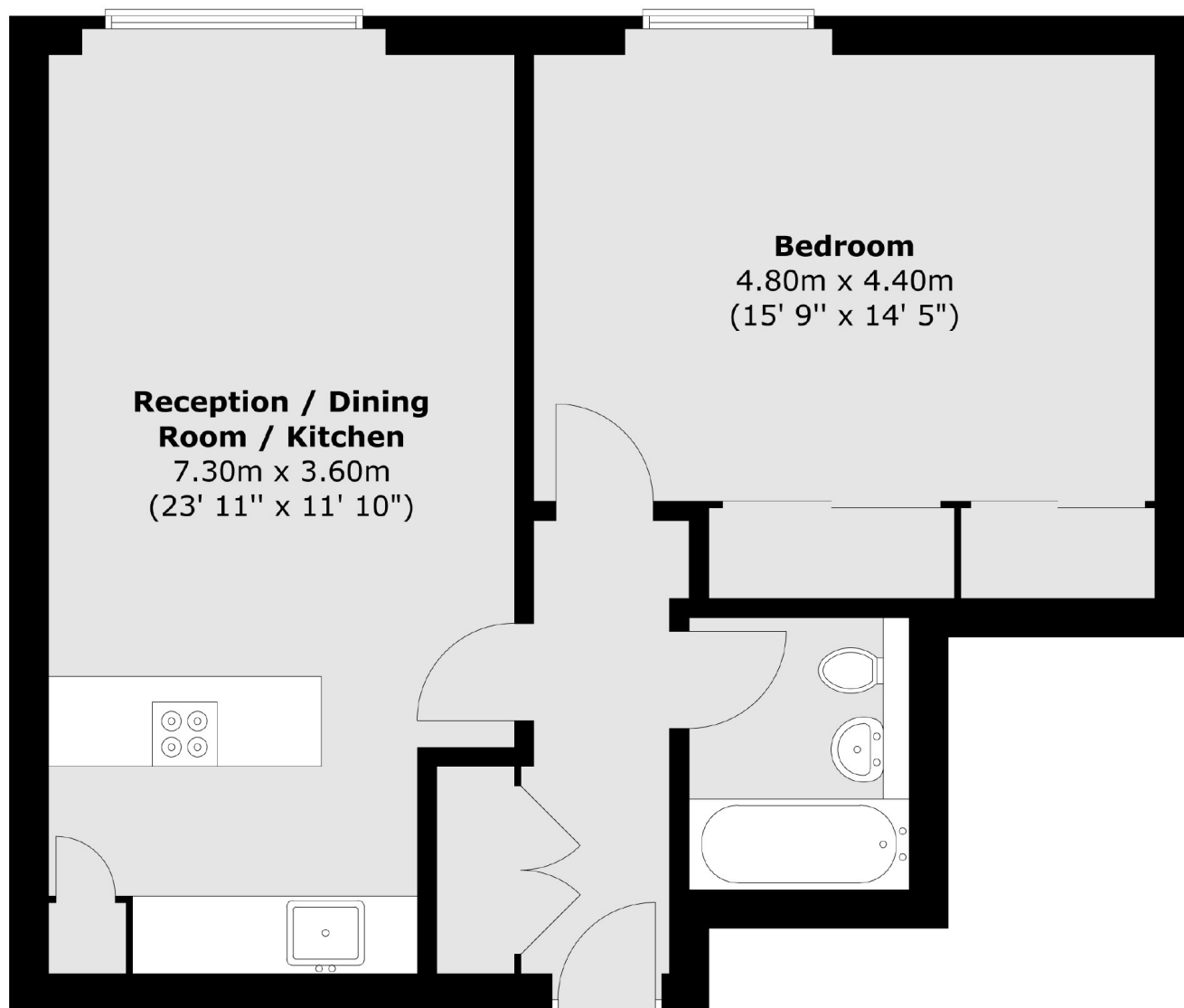
Conveniently located near both Old Street (Northern line, National Rail) and Hoxton (Windrush line), travel throughout the City is easy. This popular, canal-side development also benefits from proximity to Shoreditch Park and a number of bars and restaurants.

Features

- One Double Bedroom
- Popular Development
- Concierge
- Built In Storage
- Great Location
- Modern Design

Poole Street,
London, N1

First Floor



Total area (approx.) : 54.9 sq. m (591 sq. ft)