



Assam Street, E1

£550,000

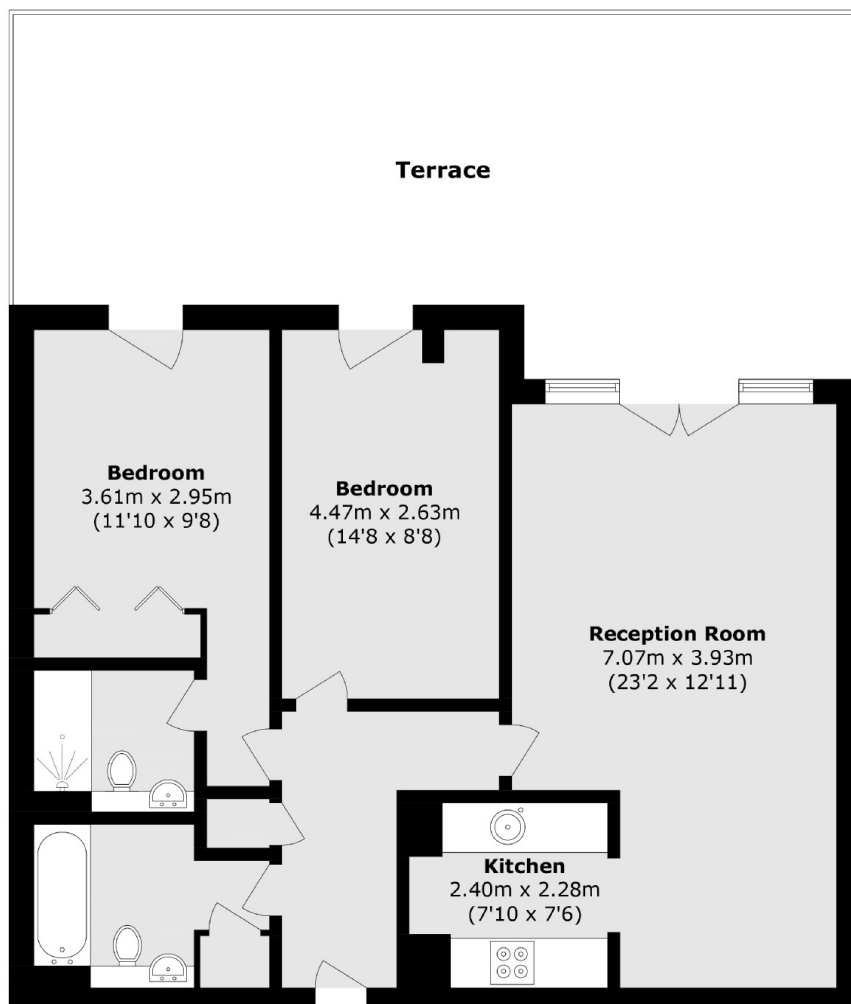
A two bedroom, two bathroom apartment with a large private terrace. This property offers an expansive reception area with access to the large private terrace, a semi-separate kitchen with built in appliances, two large bedrooms, both with built in storage, and two bathrooms, one of which is en-suite.

Central to Whitechapel and all the restaurants, bars and cultural spots the area has to offer, this property is ideally located for travel throughout the City. Aldgate and Aldgate East offer easy access to Metropolitan, Circle, Hammersmith and City and District lines and Shadwell is just a short distance for the DLR.

Features

- Two Double Bedrooms
- Private Terrace
- 24/7 Concierge Service
- Residents Gym
- Private Residents Roof Terrace
- Secure Parking

Assam Street, London, E1



Total area (approx.): 73.7 sq. m (793.3 sq. ft)
(Excluding Terrace)

Dexters

Shoreditch
44 Great Eastern Street
London
EC2A 3EP
Sales
0207 483 6371

Energy Rating: E. We aim to make our particulars both accurate and reliable. However they are not guaranteed; nor do they form part of an offer or contract. If you require clarification on any points then please contact us, especially if you're traveling some distance to view. Please note that appliances and heating systems have not been tested and therefore no warranties can be given as to their good working order.

 **RICS** | Regulated
Estate Agent
and Letting Agent

[dexters.co.uk](https://www.dexters.co.uk)