



## Mile End Road, E1

### £300,000

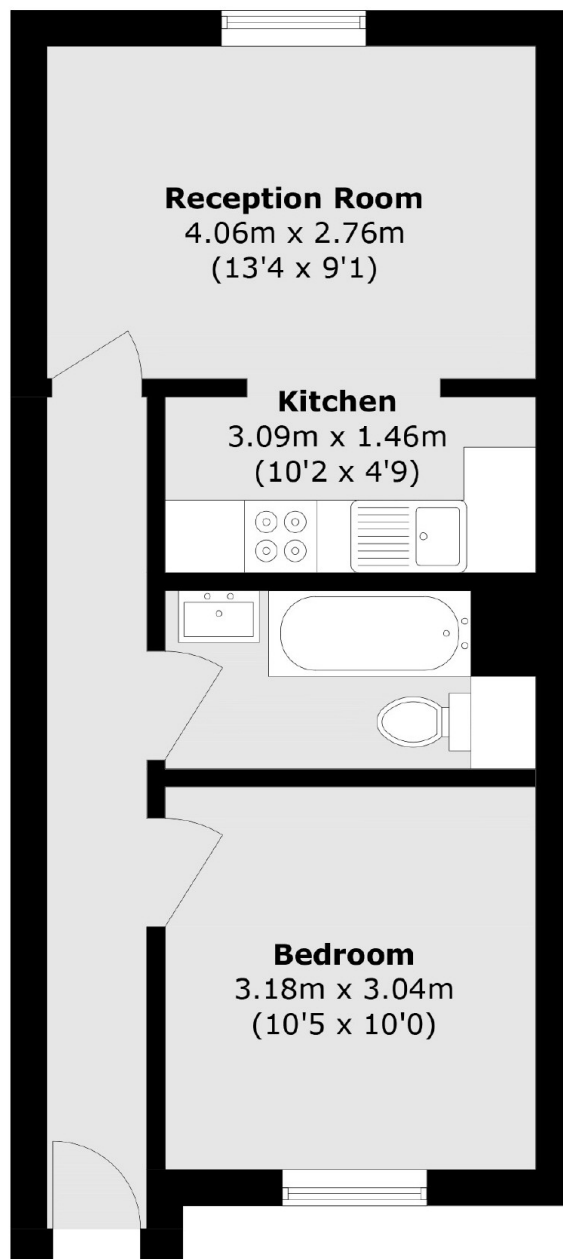
A bright, one bedroom apartment located on the top floor of this purpose built block. The apartment benefits from a south facing, open plan kitchen/living room, the kitchen is of modern design and has fully integrated appliances. The property has a good size double bedroom with inbuilt storage and a family bathroom.

The property is a short distance from a range of shops and amenities that can be found on Mile End Road such as the Genesis cinema, Rinkoff bakery and numerous supermarkets, cafés and restaurants. Stepney Green tube station (District and Hammersmith & City line) is within very short walking distance and Bethnal Green (Central line) and Whitechapel (Elizabeth line) are also in close proximity for links around the city.

### Features

- Chain Free
- Open Plan
- Top Floor
- South Facing
- Dual Aspect
- Close to transport links

# Mile End Road, London, E1



Total area (approx.): 38.2 sq. m (411.1 sq. ft)