



Lolesworth Close, E1

£550,000

A large one bedroom apartment with bright, modern interiors throughout and a private terrace. The property has a large open plan living room with space to dine and a modern kitchen with fully integrated appliances, this area leads out onto the properties unique private terrace which is also accessible via the bedroom. The properties principle bedroom is a well sized double with ample built in storage and further storage can be found in the entrance hallway as well as the well presented bathroom.

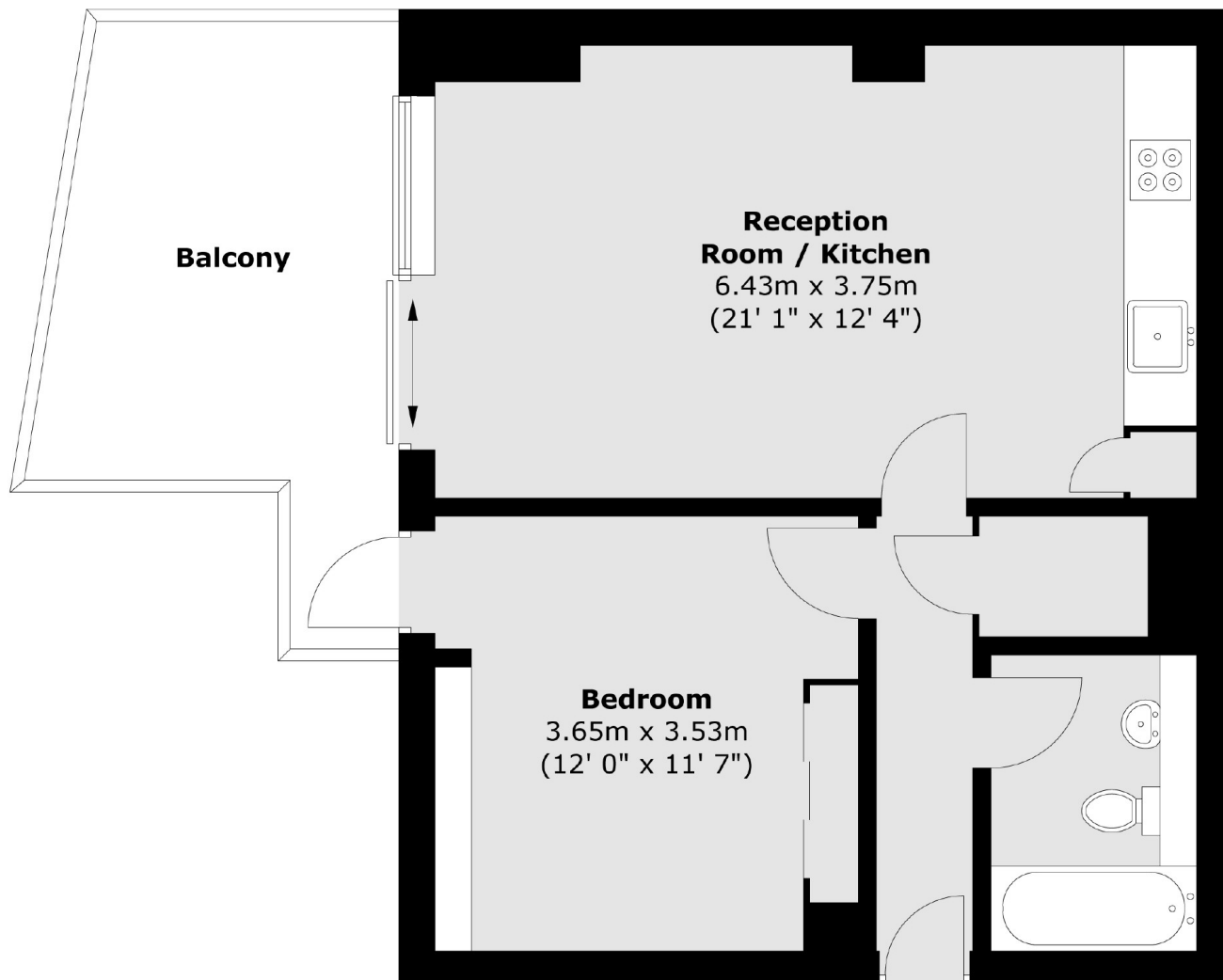
Eastone Apartments is set within a very popular location very close to both Liverpool Street Station and Aldgate East Station. The area offers a wide range of shops, restaurants and boutiques available in the nearby and popular Spitalfields Market and Shoreditch.

Features

- One Double Bedroom
- Modern Interiors
- Private Terrace
- Sought After Location
- Natural Light
- Built In Storage

Lolesworth Close, London, E1

First Floor



Total area (approx.) : 47.9 sq. m (516 sq. ft)
Total balcony area (approx.) : 11.9 sq. m (128 sq. ft)