



Rivington Street, EC2A
£1,400,000

Dexters



Rivington Street, EC2A

A large one bedroom apartment with two bathrooms arranged over two floors, recently renovated to a high standard throughout and located in the heart of Shoreditch. The entire property boasts bright and spacious accommodation, assisted by the high ceilings. The entrance opens onto the large open plan living space with room to live, dine and work. The shaker style kitchen is recently updated and offers fully integrated appliances. The first floor also features a shower room and access to the properties private balcony and shared terrace area. The second floor of the property gives access to the large bedroom with inbuilt storage which also has an impressive en-suite.

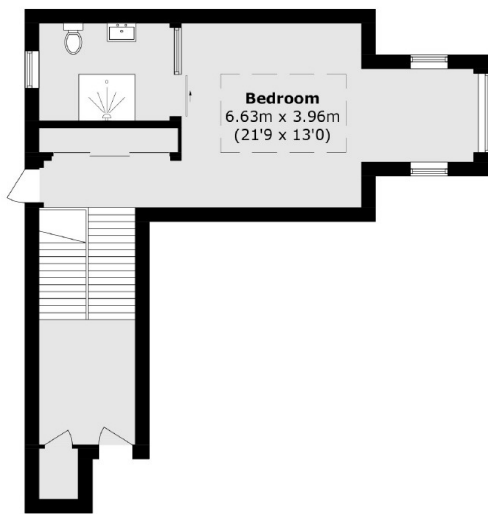
The property is situated in the heart of Shoreditch, moments from a range of boutique cafe's, bars, restaurants, shopping hotspots and further entertainment venues while Old Street Station and Shoreditch High Street Station and Liverpool Street Station are all within close proximity for links around the city.

Features

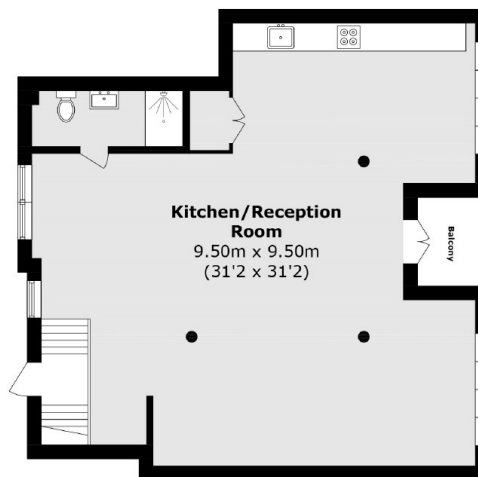
- Arranged Over Two Floors
- Recently Renovated
- Private Outside Space
- Two Bathrooms
- Bright Interiors
- Central Shoreditch Location



Rivington Street, London, EC2A



Second Floor



First Floor

Total area (approx.): 122 sq. m (1313.2 sq. ft)
Balcony area (approx.): 2.8 sq. m (30.1 sq. ft)