



## Hackney Road, E2

### £525,000

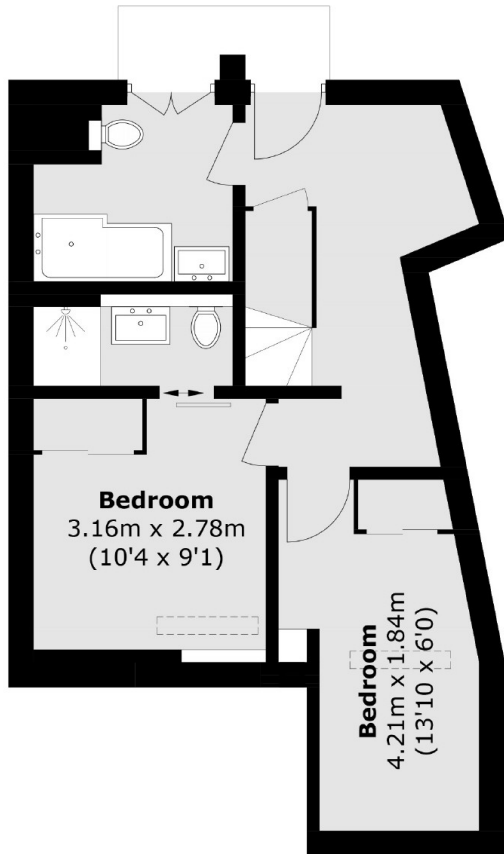
A three bedroom property arranged over two floors with its own private entrance within a sought after location and presented in renovated condition throughout. The property enters onto the bright, semi open plan, living room with space to dine, leading onto the kitchen which features a modern design and fully integrated appliances. The first floor also has one of the double bedrooms with in-built storage and a WC. The ground floor of the property has the properties further two double bedrooms, one of which is en-suite, and the family bathroom.

Located directly on Hackney Road, just moments from Columbia Road Flower Market, this property offers unmatched access to the cafés, bars and unique shopping opportunities that the area has to offer. Nearby Hoxton (Windrush line) and Bethnal Green (Central line) provide easy access throughout the City.

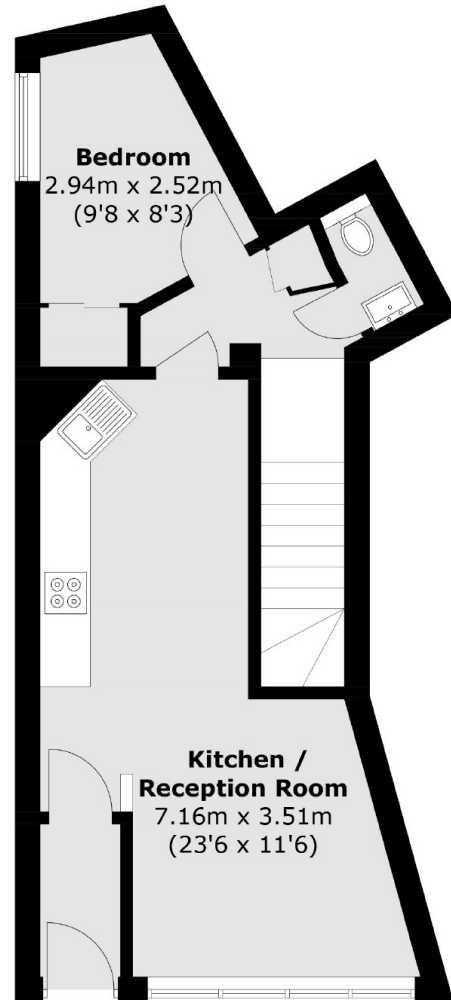
### Features

- Three Double Bedrooms
- Two Bathrooms & WC
- Renovated Condition
- Private Entrance
- Sought After Location
- Modern Interiors

# Hackney Road, London, E2



**Lower Ground Floor**



**Ground Floor**

Total area (approx.): 76.6 sq. m (824.5 sq. ft)