

Nelson Gardens, E2

£650,000

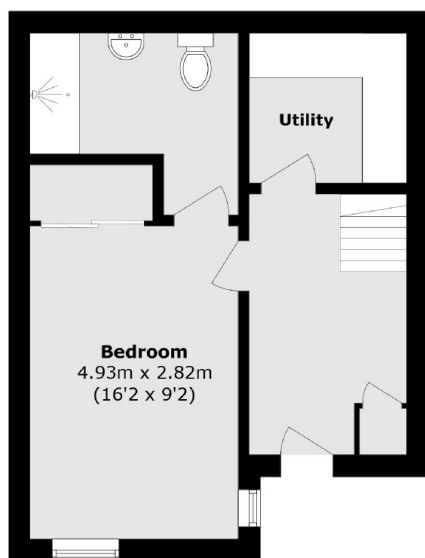
A two bedroom, two bathroom, split level apartment with two private balconies in a convenient location. The first floor consists of a large, open plan reception/kitchen, which offers built in appliances and space to dine. This area leads onto one of the two private balconies. This floor also provides one of the two double bedrooms, also with a private balcony, and the family bathrooms. The ground floor is comprised of the primary bedroom, including built in storage and an en suite, as well as a utility room.

This property is conveniently located between Bethnal Green (Central line) and Hoxton (Windrush line). The general area provides a selection of cafés, bars and restaurants as well as the green spaces of Bethnal Green Gardens and Weavers Fields.

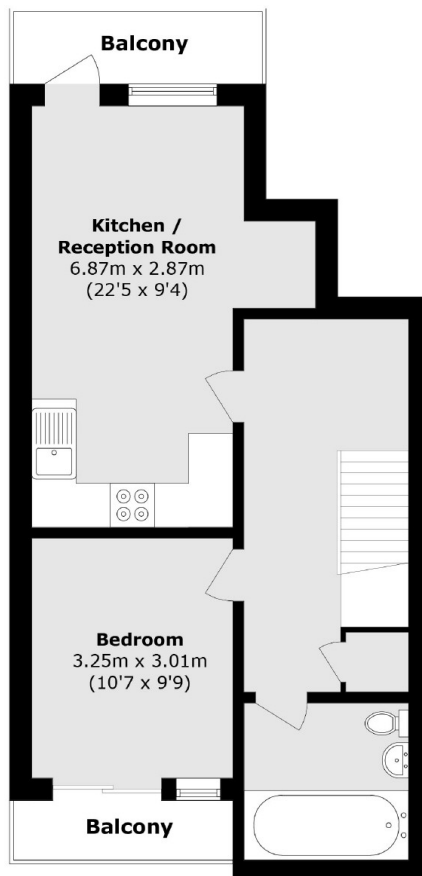
Features

- Two Double Bedrooms
- Two Bathrooms
- Two Private Balconies
- Communal Roof Garden
- Utility Room
- Split Level

Nelson Gardens, London, E2



Ground Floor



First Floor

Total area (approx.): 76.0 sq. m (818.1 sq. ft)

Balcony area (approx.): 6.3 sq. m (67.8 sq. ft)